



GreenView™ DNA Gel Stain, 10,000X in H₂O

Catalog Number	Packaging Size
N100	500 µL

Storage upon receipt:

2-25°C

Protect from light

Ex/Em: 500/530 nm, bound to nucleic acid

User Manual

GeneCopoeia, Inc.
9620 Medical Center Drive, #101
Rockville, MD 20850
USA

301-762-0888

866-360-9531

inquiry@genecopoeia.com

www.genecopoeia.com

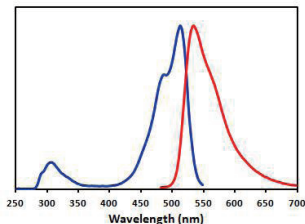
I. Product Description

GreenView is a stable and environmentally safe green fluorescent nucleic acid dye specifically designed for gel staining. **GreenView** is compatible with a standard 300 nm transilluminator, a 254 nm transilluminator, a blue-light transilluminator, or a gel reader equipped with visible light excitation such as a 488 nm laser-based gel scanner.

GreenView Nucleic Acid Gel Stain, 10,000X is a concentrated **GreenView** solution that can be diluted 10,000 times for use in precast gel staining or 5,000 times for use in post gel staining according to the procedures described below. One vial of 10,000X solution can be used to prepare at least 100 precast minigels or post-stain at least 100 minigels.

Gel staining with **GreenView** is compatible with downstream applications such as gel extraction and cloning. **GreenView** is efficiently removed from DNA by phenol/chloroform extraction and ethanol precipitation.

II. Spectral Characteristics



Excitation (blue) and emission spectra (red) of GreenView bound to dsDNA in TBE buffer

III. Staining Protocols

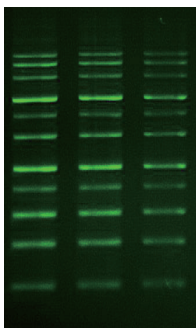
1. Post-staining Protocol

- 1.1 Run gels as usual according to your standard protocol.
- 1.2 Dilute the GreenView 10,000X stock reagent 5,000 fold to make a 2X staining solution in TE, TBE, or TAE buffer.
- 1.3 Carefully place the gel in a suitable polypropylene container. Gently add a sufficient amount of the 2X staining solution to submerge the gel.
- 1.4 Agitate the gel gently at room temperature for 30 min.
- 1.5 Wash the gel with DI water to remove excess dye. Image the stained gel with a transilluminator, or a laser-based gel scanner using a long path green filter such as a SYBR Filter or GelStar filter.

2. Pre-cast Protocol

- 2.1 Prepare molten agarose gel solution using your standard protocol.
- 2.2 Dilute the GreenView 10,000X stock reagent into the molten agarose gel solution at 1:10,000 and mix thoroughly.
- 2.3 Cast the gel and allow it to solidify.
- 2.4 Load samples and run the gels using your standard protocol.
- 2.5 Image the stained gel with a transilluminator, or a laser-based gel scanner using a long path green filter such as a SYBR Filter or GelStar filter.

Note: The pre-cast protocol is not recommended for polyacrylamide gels. Use the post staining protocol for acrylamide gels.



GreenView in pre-cast gel staining

Note: Gel stain results with GreenView in precast gel staining using 1% agarose gel in TBE buffer. Two-fold serial dilutions of 1 kb DNA Ladder were loaded onto each gel in 3 lanes in the amounts of 100 ng, 50 ng and 25 ng(left to right).

IV. Related Products

Catalog Number	Product
N101	GreenView™ Plus DNA Gel Stain, 10,000X in DMSO, 500 µL
N102	RedView™ DNA Gel Stain, 10,000X in DMSO, 500 µL

V. Troubleshooting

Problem	Suggestion
Smeared DNA bands in precast gel	<ol style="list-style-type: none"> 1. Reduce the amount of DNA loading. Smeared bands can be caused by overloading. 2. Perform post-staining instead of pre-casting. 3. Prepare a lower percentage agarose gel for better resolution of large fragments. 4. Change the running buffer. TBE buffer has a higher buffering capacity than TAE.

Problem	Suggestion
Discrepant DNA migration in precast gel	<ol style="list-style-type: none"> 1. Reduce the amount of DNA loading. 2. Reduce the amount of dye used, i.e. use 0.5X in precast gels. 3. Perform post-staining instead of pre-casting.
Weak fluorescence signal	<ol style="list-style-type: none"> 1. The dye may be precipitated out of solution. Vortex to redissolve. 2. Increase the amount of dye used, i.e. use 2X in precast gels..

VI. Frequently Asked Questions

Question	Answer
Can GreenView be used to stain ssDNA or RNA?	GreenView can be used to stain ssDNA and RNA, but we recommend GreenView Plus, RedView for this application because it is ten times more sensitive for single stranded nucleic acids than GreenView.
Is GreenView compatible with downstream applications such as cloning, ligation and sequencing?	Yes. We recommend Qiagen or Zymo gel extraction kits or phenol-chloroform extraction to remove the dye from DNA.
Is GreenView compatible with Southern or Northern blotting?	GreenView has not been validated in blotting applications.
Can I reuse a GreenView precast gel after electrophoresis?	We do not recommend reusing GreenView precast gels as signal decreases with subsequent electrophoresis.
What is the lower detection limit of GreenView?	Some users have reported being able to detect less than 0.5 ng DNA. However, the limit of detection will depend on instrument capability and exposure settings.
Does GreenView need to be used in the dark?	You can use the dye in room light, however we recommend storing the dye in the dark.

GreenView and its uses are covered by US and international patents. SYBR is trademark of Molecular Probes/Invitrogen; GelStar is trademark of FMC Corporation. Materials from Applied BioProbes are sold for research use only, and are not intended for any therapeutic or diagnostic use.