

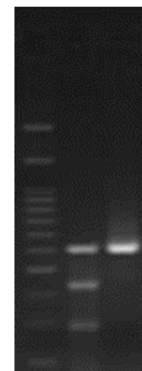
## • **Genome-CRISP™ CRISPR-Cas9 Stable Cell Lines** •

**70+ cell lines ♦ Cas9 validated ♦ Next day shipping**

### Advantages

- » Stable Cas9 integration minimizes the need for co-transfection or co-transduction of sgRNAs. Ideal for high-throughput sgRNA applications.
- » Cas9 functionally validated using the IndelCheck™ T7 endonuclease Endonuclease I assay.
- » Single clone isolation provides consistent, high-level Cas9 expression in a uniform genetic background.
- » Compatible with GeneCopoeia Genome-CRISP™ sgRNA clones, sgRNA libraries, and donor clones.

**T7EI: M + -**



**Figure 1.** Human H1299 cells stably expressing Cas9 nuclease from the AAVS1 Safe Harbor site were transfected with a plasmid carrying an sgRNA for the HUWE1 gene. Using the GeneCopoeia IndelCheck™ kit, PCR products flanking the sgRNA target site were generated, denatured, reannealed, and treated with (+) or without (-) T7 Endonuclease I, which cleaves mismatched DNA.

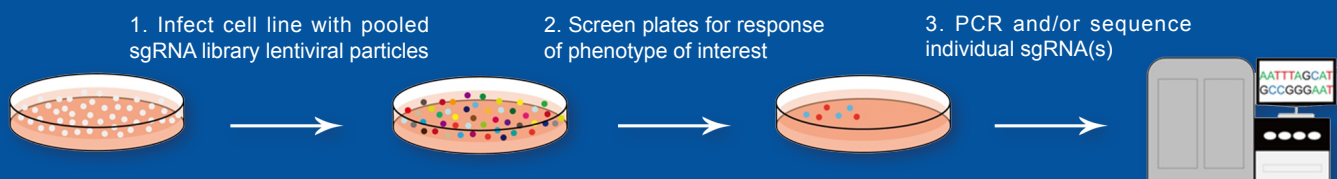
### Available cell types

More than 70 human, mouse and rat cell lines, including H1299, HEK293, MCF-7 and Neuro2a.

### Available cancer types

More than 17 different cancers, including lung, cervical, breast, liver, and others.

## - For sgRNA library screening and functional validation



**Figure 2.** Application of Genome-CRISP™ Cas9 stable cell lines with CRISPR sgRNA libraries for drug target discovery.

# Genome-CRISP™ CRISPR-Cas9 Stable Cell Lines

Visit our website, [www.genecopoeia.com/product/cas9-cell-line](http://www.genecopoeia.com/product/cas9-cell-line), to see a complete list.

Cell Type	Cell Name	Select Marker
Bladder cancer, Human	T24	Hygro
Bone cancer, Human	U-2 OS	Hygro
Bone marrow cancer, Human	K562	Hygro
Brain astrocytoma, Human	1321N1	Hygro
Breast cancer, Human	DU4475	Hygro
Breast cancer, Human	MCF-7	Hygro
Breast cancer, Human	MDA-MB-231	Hygro
Breast cancer, Human	MDA-MB-468	Hygro
Breast cancer, Human	T47D	Hygro
Breast cancer, Human	SK-BR-3	Hygro
Breast cancer, Human	HCC70	Hygro
Breast cancer, Human	HCC1428	Hygro
Caecum cancer, Human	LS411N	Hygro
Cervical cancer, Human	HeLa	Hygro
Colon cancer, Human	COLO 205	Hygro
Colon cancer, Human	HT-29	Hygro
Colon cancer, Human	LoVo	Hygro
Colon cancer, Human	RKO	Hygro
Colon cancer, Human	T84	Hygro
Colon cancer, Human	SNU-C1	Hygro
Fibrosarcoma, Human	HT1080	Hygro
Embryonic kidney, Human	HEK293	Hygro
Embryonic kidney, Human	HEK293T	Puro
Immortalized kidney cell line, Human	HK2	Hygro
Kidney cancer, Human	786-O	Hygro
Liver cancer, Human	C3A	Hygro
Liver cancer, Human	HepG2	Hygro
Liver cancer, Human	PLC/PRF/5	Hygro
Liver cancer, Human	SNU-387	Hygro
Liver cancer, Human	SNU-423	Hygro
Liver cancer, Human	SNU-449	Hygro
Liver cancer, Human	SNU-475	Hygro
Liver/ascites cancer, Human	SK-HEP-1	Hygro
Lung cancer, Human	A549	Hygro
Lung cancer, Human	H1975	Hygro

Cell Type	Cell Name	Select Marker
Lung cancer, Human	NCI-H1299	Hygro
Lung cancer, Human	NCI-H1299	Puro
Lung cancer, Human	NCI-H1437	Hygro
Lung cancer, Human	NCI-H661	Hygro
Lung cancer, Human	HCC827	Hygro
Neuroblastoma, Human	SH-SY5Y	Hygro
Pancreatic cancer, Human	BXPC-3	Hygro
Pancreatic cancer, Human	CFPAC-1	Hygro
Pancreatic cancer, Human	HPAF-II	Hygro
Acute T cell leukemia, Human	Jurkat	Hygro
Ovary, Human	SK-OV-3	Hygro
Prostate cancer, Human	DU145	Hygro
Stomach/gastric cancer, Human	AGS	Hygro
Stomach/gastric cancer, Human	KATOIII	Hygro
Stomach/gastric cancer, Human	SNU-1	Hygro
Stomach/gastric cancer, Human	SNU-16	Hygro
Colon, Mouse	CT26	Hygro
Embryo fibroblast, Mouse	NIH-3T3	Hygro
Lymph, Mouse	BA/F3	Hygro
Mammary gland, Mouse	4T1	Hygro
Muscle (myoblast), Mouse	C2C12	Hygro
Neuroblastoma, Mouse	Neuro2a	Hygro
Neuroblastoma, Mouse	Neuro2a	Puro
Neuroblastoma, Mouse	Neuro2a	Neo
Glioma, Rat	C6	Hygro

## Contact us:

GeneCopeia, Inc.  
9620 Medical Center Drive, Suite 101  
Rockville, MD 20850, USA

Email [inquiry@genecopoeia.com](mailto:inquiry@genecopoeia.com)  
Tel +1 (301) 762-0888  
Toll free +1 (866) 360-9531  
Fax +1 (301) 762-3888  
Website [www.genecopoeia.com](http://www.genecopoeia.com)



CL-050918