

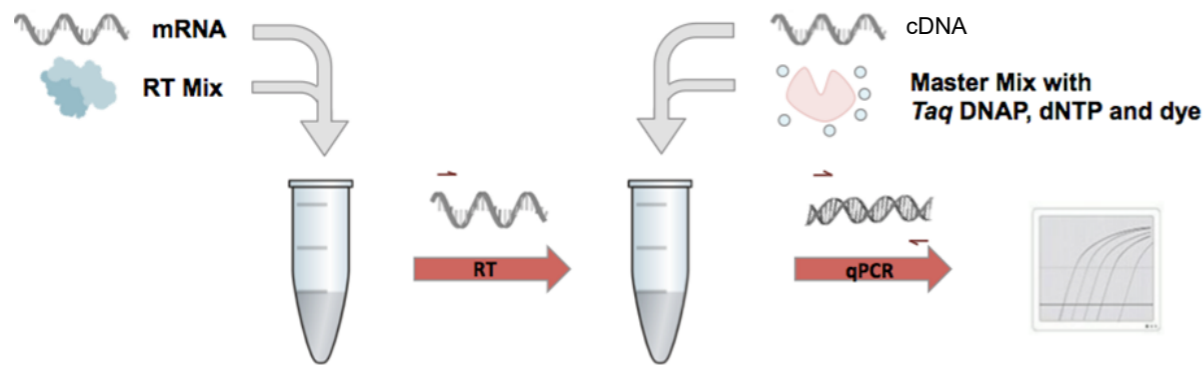
BlazeTaq™ RT-qPCR System

- High sensitivity
- High specificity with minimal formation of primer-dimers and non-specific products
- High amplification efficiency over a wide GC-content range

BlazeTaq™ Two-Step RT-qPCR Kits

Detects as little as 10 pg RNA template

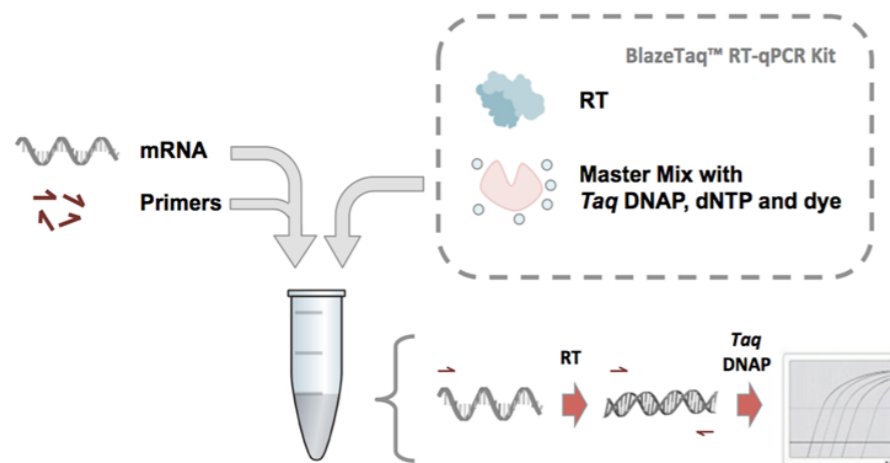
BlazeTaq™ Two-Step RT-qPCR Kit



- BlazeTaq™ SYBR Green qPCR Mix 2.0
- BlazeTaq™ Probe qPCR Mix

BlazeTaq™ One-Step RT-qPCR Kits

Accurate detection of target RNA from as little as 0.1 pg RNA extract



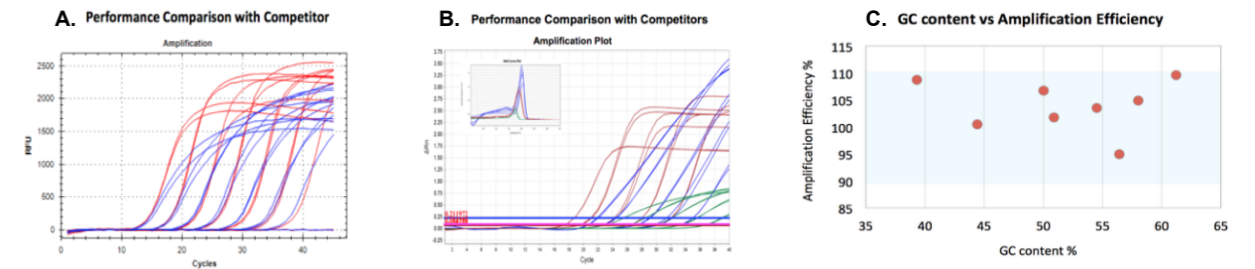
- BlazeTaq™ SYBR Green One-Step RT-qPCR Kit
- BlazeTaq™ Probe One-Step RT-qPCR Kit

BlazeTaq™ Two-Step RT-qPCR Kits

- Antibody-modified hot start Taq DNA polymerase and optimized buffer system that allows a wide dynamic range, high specificity and fast cycling times
- Simply add DNA template, primers, and water to start your reaction

BlazeTaq™ SYBR Green qPCR Mix 2.0

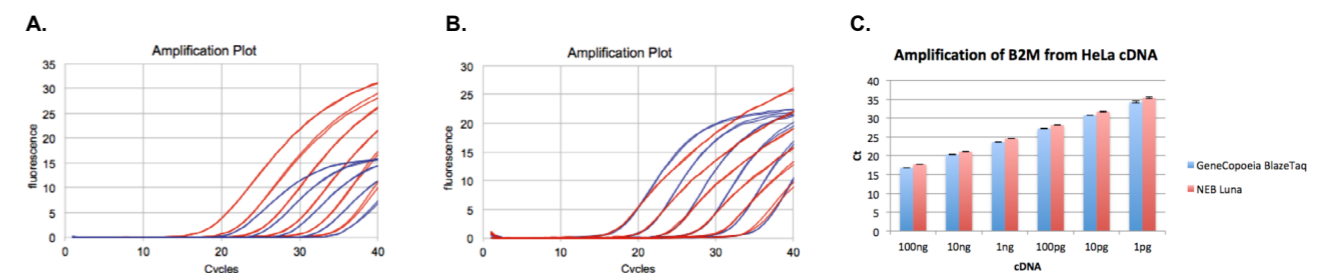
- Greater sensitivity, amplification efficiency and specificity
- Amplification efficiencies range from 90% to 110% over a wide range of GC content



A. Amplification of the B2M gene using serial diluted cDNA from HeLa cell line. Performance comparison of BlazeTaq™ (red) with BioRad SsoAdvanced™ Universal SYBR® Green Supermix (blue). B. Performance comparison of BlazeTaq™ (red) with PowerUp™ SYBR Green Master Mix from Applied Biosystems (green), and GoTaq® qPCR Master Mix from Promega (blue) shown. C. DNA templates with different GC-content were serial-diluted and amplified.

BlazeTaq™ Probe qPCR Mix

- Stronger signals with similar amplification performance
- Compatible with diverse real-time PCR instruments
- Outperforms competitors' products on the sensitivity and specificity of cDNA and genomic DNA detection



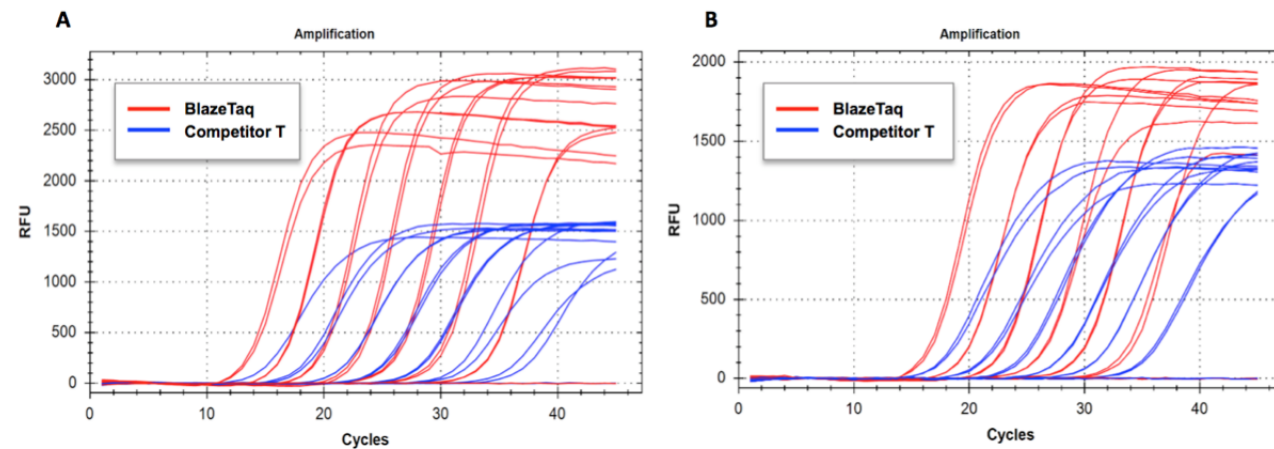
A and B. qPCR targeting ACTB(A), and B2M(B) using the BlazeTaq™ Probe qPCR (red) kit and competitor's Taqman qPCR kit (blue) with cDNA from HeLa RNA extract ranging from 100 ng to 1 pg in duplicates. C. Performance comparison of BlazeTaq™ Probe qPCR kit with competitor's qPCR kit by the amplification of B2M from cDNA of HeLa cells.

BlazeTaq™ One-Step RT-qPCR Kits

- One-step RT-qPCR kit using RNA as the starting material
- Compatible with diverse real-time PCR instruments
- Offers best-in-class performance for RNA quantification

BlazeTaq™ One-Step SYBR Green RT-qPCR Kits

- Best-in-class performance with earlier Ct and stronger signals compared to competitor's products

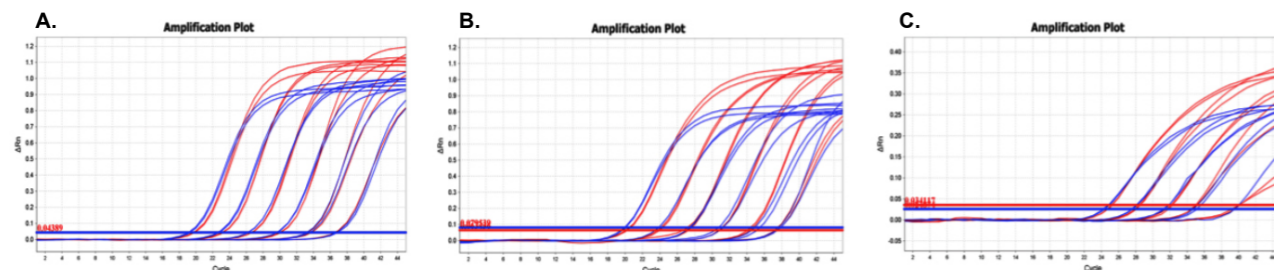


A. Amplification curves of GAPDH in HeLa cells RNA extract ranging from 100 ng to 0.1 pg with BlazeTaq™ (red) and Competitor T's kit (blue); B. Amplification curves of Actin in HeLa cells RNA extract ranging from 100 ng to 0.1 pg with BlazeTaq™ (red) and Competitor T's kit (blue).

BlazeTaq™ One-Step Probe RT-qPCR Kits

- Optimized buffer system allows high amplification efficiency and specificity, as well as enhanced sensitivity of real time PCR reactions over a wide range of templates

BlazeTaq™ Probe One-Step RT-qPCR System



RT-qPCR targeting ACTB(A), GAPDH(B), and B2M(C) using the Blaze Taq Probe One-Step RT-qPCR(red) kit and competitor's Taqman RT-qPCR kit (blue) with RNA extract from HeLa ranging from 10 ng to 0.1 pg in duplicates.

Order information

BlazeTaq™ Two-Step RT-qPCR System

Catalog #	Product	Description
BlazeTaq™ SYBR Green qPCR Mix 2.0		
QP031 (200 rxn) QP032 (400 rxn) QP034 (1000 rxn)	BlazeTaq™ SYBR Green qPCR Mix 2.0 (with ROX)	High-fidelity, hot-start DNA polymerase, ROX reference dye, optimized reaction buffer and dNTPs
QP041 (200 rxn) QP042 (400 rxn) QP044 (1000 rxn)	BlazeTaq™ SYBR Green qPCR Mix 2.0 (without ROX)	High-fidelity, hot-start DNA polymerase, optimized reaction buffer and dNTPs
BlazeTaq™ Probe qPCR Mix		
QP035 (100 rxn) QP036 (200 rxn) QP037 (600 rxn) QP039 (1000 rxn)	BlazeTaq™ Probe qPCR Mix (with ROX)	BlazeTaq™ Probe qPCR Mix (5×), ROX reference dye
QP045 (100 rxn) QP046 (200 rxn) QP047 (600 rxn) QP049 (1000 rxn)	BlazeTaq™ Probe qPCR Mix (without ROX)	BlazeTaq™ Probe qPCR Mix (5×)

BlazeTaq™ One-Step RT-qPCR System

BlazeTaq™ SYBR Green One-Step RT-qPCR Kits		
QP070 (100 rxn) QP071 (200 rxn) QP072 (600 rxn) QP074 (1000 rxn)	BlazeTaq™ SYBR Green One-Step RT-qPCR Kit (with ROX)	High-fidelity, hot-start DNA polymerase, ROX reference dye, optimized reaction buffer and dNTPs
QP080 (100 rxn) QP081 (200 rxn) QP082 (600 rxn) QP084 (1000 rxn)	BlazeTaq™ SYBR Green One-Step RT-qPCR Kit (without ROX)	High-fidelity, hot-start DNA polymerase, optimized reaction buffer and dNTPs
BlazeTaq™ Probe One-Step RT-qPCR Kits		
QP075 (100 rxn) QP076 (200 rxn) QP077 (600 rxn) QP079 (1000 rxn)	BlazeTaq™ Probe One-Step RT-qPCR Kit (with ROX)	BlazeTaq™ Probe One-Step RT-qPCR Mix (5×), BlazeTaq™ RTase Mix (50×), ROX reference dye
QP085 (100 rxn) QP086 (200 rxn) QP087 (600 rxn) QP089 (1000 rxn)	BlazeTaq™ Probe One-Step RT-qPCR Kit (without ROX)	BlazeTaq™ Probe One-Step RT-qPCR Mix (5×), BlazeTaq™ RTase Mix (50×)

Related Products

QP056 (20 RT reactions) QP057 (60 RT reactions)	SureScript™ First-Strand cDNA Synthesis Kit for gene qPCR array	M-MLV RT (RNase H-), Reaction Buffer, RNase Inhibitor, dNTPs, Oligo(dT) ₁₈ , Random Primer, dd H ₂ O and spike-in control (for use with gene qPCR arrays)
Variable	All-in-One™ qPCR Primer (200 reactions)	Validated for human, mouse, and rat genes to ensure specificity and sensitivity.
QP020	RNAzol® RT RNA Isolation Reagent	Isolate total RNA and small RNA from samples of various origins, including human, animal, plant, bacterial and viral origin

Contact us:

GeneCopoeia, Inc.

9620 Medical Center Dr. Suite 101,
Rockville, MD 20850 USA



Email: inquiry@genecopoeia.com
Tel: +1 (301) 762-0888
Fax: +1 (301) 762-3888
Website: www.genecopoeia.com