

Infect All Cells

LentiFect™ Lentiviral Particles

For *in vitro* and *in vivo* applications

Features

- Titers ranging from 10^8 to 10^9 TU/ml
- Purified and ultra-purified for *in vitro* and *in vivo* studies, respectively
- Largest collection of sequence-verified ORF cDNA, miRNA, shRNA, promoter, and sgRNA lentiviral clones available for packaging
- Collection of 100+ premade lentiviral particles available for *Next-day™* shipment, including GFP, mCherry, YFP, CFP and luciferases

Purified particles for *in vitro* (cell culture) studies

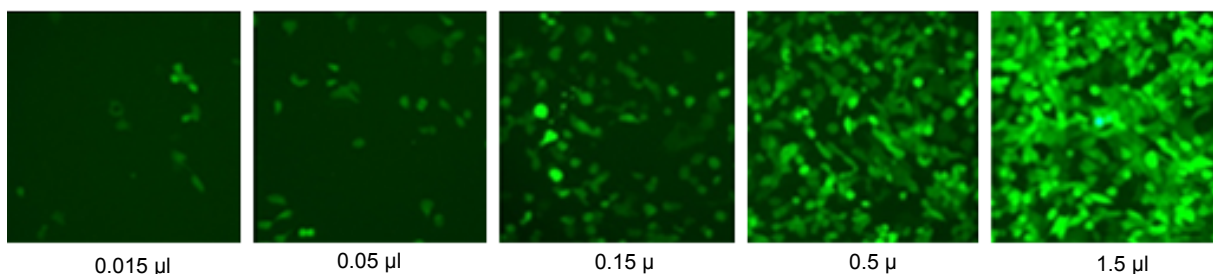


Figure 1. H1299 cells in 24-well plates were transduced with the indicated amounts of eGFP purified particles, (catalog number LPP-EGFP-LV105) in the presence of 5 μ g/ml of polybrene. The expression of eGFP was visualized with a fluorescence microscope 72 hours post-transduction.

Ultra-purified particles for *in vivo* (animal) studies

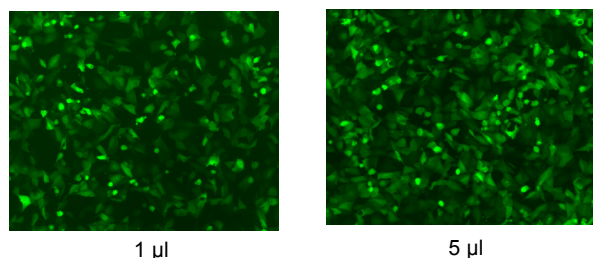


Figure 2. H1299 cells in 24-well plates were transduced with the indicated amounts of eGFP ultra purified particles. The expression of eGFP was checked with a fluorescence microscope 48 hours post-transduction. Exposure time was 0.2 s.

LentiFect™ Lentiviral Particles

High quality • Quick delivery • Low price

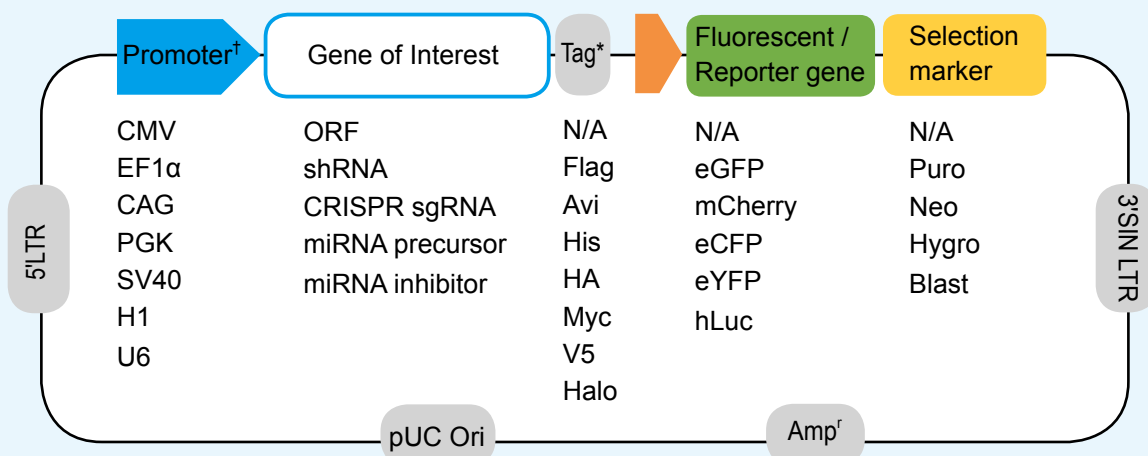
Lentiviral Particles for *in vivo* and *in vitro* studies

Custom lentiviral particles Titer of 10 ⁸ TU/mL, purified and concentrated	Features
Any ORF, shRNA, sgRNA, precursor miRNA or miRNA inhibitors	Third generation packaging system Titer determined by qPCR
Premade particles Titer over 10 ⁸ TU/mL, purified and concentrated	Features
Positive and negative controls	Fluorescent tags: eGFP, eYFP, eCFP, mCherry, PLUM Luciferase reporters: Firefly, Renilla, Gaussia
iPSC ORF clones	OSKM transcription factors: Oct4, Sox2, Klf4, c-Myc, Nanog and Lin28
Utility ORF clones	CRE recombinase, FLP recombinase, SV40 large T antigen, HIV tat, Cas9 nuclease*

*Cas9 nuclease titer ranges from 10⁶ to 10⁸ TU/mL

Premade particles: Next-day shipment and clone price included!

GeneCopoeia lentiviral clone features



*Not all tags, fluorescent/reporter genes and selection markers might be available for your product/vector of choice. Please refer to our website for detailed information.

†You can also choose the promoter of a specific gene to study its transcription and regulation. Please refer to "promoter reporter" product on our website for more details.

Contact us:

GeneCopoeia, Inc.

9620 Medical Center Dr. Suite 101,
Rockville, MD 20850 USA



Email
Tel
Toll free
Fax
Website

inquiry@genecopoeia.com
+1 (301) 762-0888
+1 (866) 360-9531
+1 (301) 762-3888
www.genecopoeia.com