

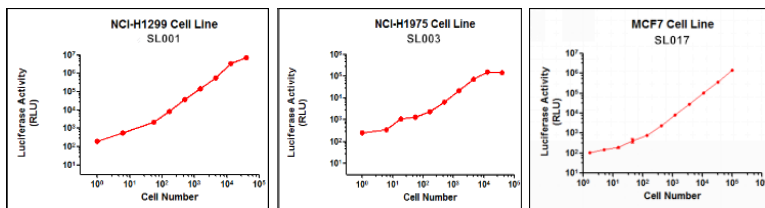
# Premade Labeled Cancer Cell Lines

## Luciferase+GFP Dual Labeled Cancer Cell Lines

GeneCopoeia offers premade stable cancer cell lines with dual labels (Luciferase + GFP). They are ready to use and express high levels of luciferase and GFP.

### Applications

- Study tumor cell properties using biochemical and genetic methods in vitro
- Monitor tumor growth, progression, and metastasis in vivo in response to a variety of environmental stimuli, drugs, and other therapeutic treatments.

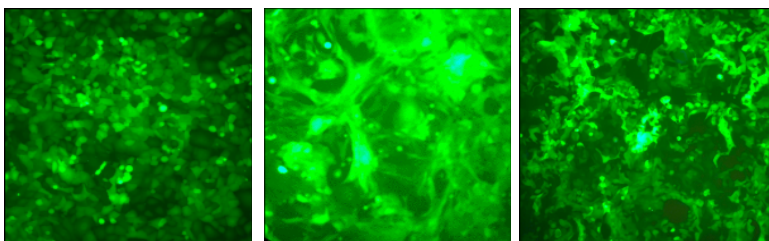


**Figure 1.** Luciferase activity of dual-labeled cancer cell lines

**A:** SL001 (NCI-H1299 Lung Cancer Cell Line)

**B:** SL003 (NCI-H1975 Lung Cancer Cell Line)

**C:** SL017 (MCF7 Breast Cancer Cell Line)



**Figure 2.** Dual-labeled cancer cell line expressing GFP

GFP fluorescence after exposure for 100 mS at 95% cell confluence using a Nikon Fluorescence Microscope

**A:** SL001 (NCI-H1299 Lung Cancer Cell Line)

**B:** SL003 (NCI-H1975 Lung Cancer Cell Line)

**C:** SL017 (MCF7 Breast Cancer Cell Line)

### Detection Marker: Firefly Luciferase and GFP

Cat No.	Cancer Cell Line	Tissue
SL001	NCI-H1299	Lung
SL002	NCI-H661	Lung
SL003	NCI-H1975	Lung
SL004	LoVo	Colon
SL005	COLO 205	Colon
SL006	HT-29	Colon
SL014	NCI-N87	Stomach
SL015	AGS	Stomach
SL016	HCC70	Breast
SL017	MCF7	Breast
SL018	MDA-MB-231	Breast
SL019	K562	Bone marrow

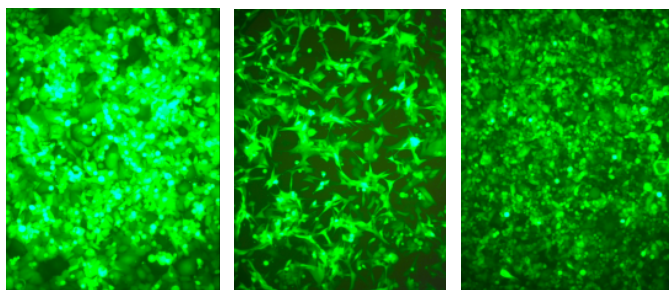
# Premade Labeled Cancer Cell Lines

## GFP Labeled Cancer Cell Lines

GeneCopoeia offers premade stable cancer cell lines labeled with GFP. They are ready to use and express high levels of GFP.

### Applications

- Study tumor cell properties using biochemical and genetic methods in vitro
- Monitor tumor growth, progression, and metastasis in vivo in response to a variety of environmental stimuli, drugs, and other therapeutic treatments.



A

B

C

**Figure 3.** GFP labeled cancer cell lines  
GFP fluorescence after exposure for 100 ms

**A:** SL101 (NCI-H1299 Lung Cancer Cell Line)

**B:** SL103 (NCI-H1975 Lung Cancer Cell Line)

**C:** SL116 (HCC70 Breast Cancer Cell Line)

For more information about GeneCopoeia™  
**Mammalian Stable Cell Line Development  
Services** or premade labeled cancer cell lines.

Contact us at [inquiry@genecopoeia.com](mailto:inquiry@genecopoeia.com)  
or 1-866-360-9531 (toll-free)

### Detection Marker: eGFP

Cat No.	Cancer Cell Line	Tissue
SL101	NCI-H1299	Lung
SL102	NCI-H661	Lung
SL103	NCI-H1975	Lung
SL106	HT-29	Colon
SL114	NCI-N87	Stomach
SL115	AGS	Stomach
SL116	HCC70	Breast
SL117	MCF7	Breast
SL118	MDA-MB-231	Breast

STA2-030718