

OncoSpot™ KRAS G13C/G13D HCT116 Cancer Mutation Cell Line

- Catalog number:** SL712
- Product:** KRAS G13C/G13D HCT116 cancer marker mutation cell line (heterozygote)
- Description:** This product is a HCT116 cell line genetically modified using CRISPR to have one of the alleles with a G->T point mutation at the *KRAS* gene position 37 in exon 2 and a puromycin marker in intron 1 of *KRAS* for selection; and the other allele with a G->A point mutation at the *KRAS* position 38 in exon 2 carried by the HCT116 parental cell line.
- Genotype:** KRAS (G13C, puro/G13D)
- Genomic Mutation:** G13C, gttggagctggtGgc -> gttggagctggtTgc
- Quantity:** 1 vial of 2×10^6 cells; frozen
- Shipping conditions:** Dry ice
- Storage conditions:** Liquid nitrogen vapor phase. Remove the item from the dry ice packaging and check all items for damage and leakage. Place immediately into storage at or below -140°C , preferably into the liquid nitrogen vapor phase, until use.
- Source of parental line:**
HCT116
Organism: *Homo sapiens*, human
Tissue: colon
Cell Type: epithelial
- Quality control:** >95% viability before freezing. All cells were tested and found to be free of mycoplasma, bacteria, viruses, and other toxins.
- Safety instructions:** To ensure safety, protective gloves, clothing, and a face mask should be worn when handling frozen vials. Some leakage may occur into the vial during storage. The liquid nitrogen will be converted to gas upon thawing. Due to the nature of nitrogen gas, pressure may build within the vial and possibly result in the vial exploding or losing its cap. This may cause flying debris.
- Thawing procedure:** The vial of cells should be thawed in a 37°C water bath with gentle agitation. For optimal performance, the vial should be thawed in under two minutes.

Ensure that the cap of the vial did not loosen upon thawing, and re-tighten as needed. Spray the vial with 70% EtOH and wipe off. Repeat. Using aseptic technique, add the contents of the vial to 9 ml of complete growth medium (without selection). Centrifuge for 5 min. at 250 xg. Aspirate the medium, being careful not to disturb the pellet. Resuspend in 10 mL of complete growth medium, and place into a culture vessel of your choice. Only add selection to the medium after 24 hours in culture.

Culture conditions: Complete Growth Medium

The base medium for this cell line is RPMI1640. For optimal growth and maintenance of selection, add the following components to the base medium: fetal bovine serum to a final concentration of 10%.

Selection

Puromycin to a final concentration of 0.6 µg/mL.

Culture temperature

37 °C with 5% CO₂.

Subculture

Replace culture medium with selection-free medium and incubate for up to 6 hours. Rinse the cells and split at 1 x 10⁵ viable cells/mL to 1 x 10⁶ cells/mL.

Cryopreservation

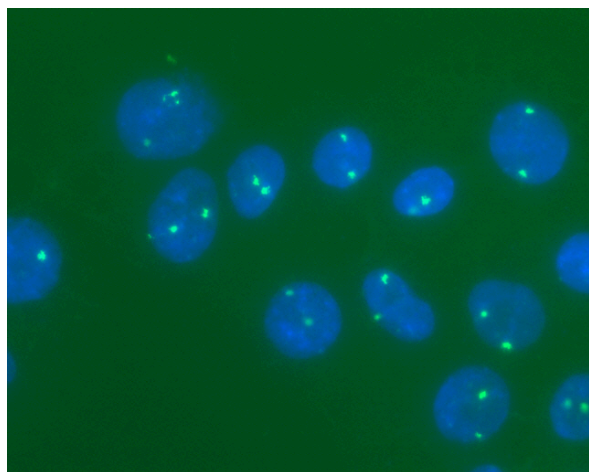
Freeze slowly in complete growth medium supplemented with 5% (v/v) DMSO.

Mycoplasma

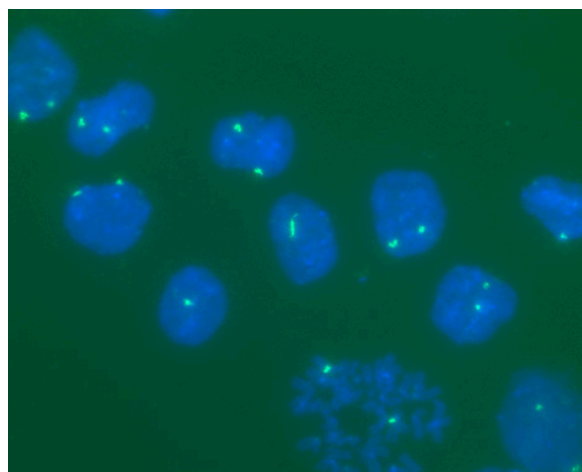
Negative (MycoAlert Mycoplasma Detection Kit from Lonza).

Product Quality Control

FISH of KRAS probes in HCT116 cell lines



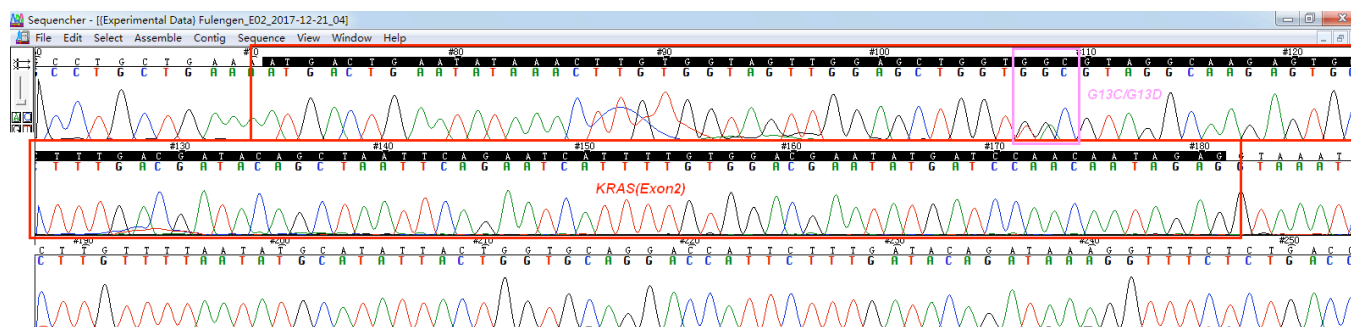
Parental HCT116 cell line



SL712

Figure 1. FISH of human HCT116 cell lines: GCI VividFISH™ FISH probes CEP12 were hybridized in HCT116 parental cell line and SL712 mutant cell line. The two green signals are from chromosome 12 centromeres. The nuclei are counter stained with DAPI (blue).

Sequencing Results



Citation of product: If use of this item results in a publication, please use this information:
OncoSpot™ KRAS G13C/G13D HCT116 Cancer Mutation Cell Lines (SL712, GeneCopoeia, Inc., Rockville, MD).

Limited Use License

A limited use license is granted to the Buyer of the Product. The Product shall be used by the Buyer for internal research purposes only. The Product is expressly not designed, intended, or warranted for use in humans or for therapeutic or diagnostic use. The Product must not be resold, repackaged or modified for resale, or used to manufacture commercial products without prior written consent from GeneCopoeia. This Product should be used in accordance with NIH guidelines developed for recombinant DNA and genetic research. Use of any part of the Product constitutes acceptance of the above terms.

Copyright ©2017 GeneCopoeia, Inc.

C9SCL-DS-063017

GeneCopoeia, Inc.

9620 Medical Center Drive, #101

Rockville, MD 20850 USA

Tel: 301-762-0888; Fax: 301-762-3888

Email: support@genecopoeia.com

Web: www.genecopoeia.com