



# ExProfile™ Gene qPCR Arrays

For high-throughput profiling of coding-gene expression

## User Manual

GeneCopoeia, Inc.  
9620 Medical Center Drive, #101  
Rockville, MD 20850  
USA

301-762-0888  
866-360-9531

[support@genecopoeia.com](mailto:support@genecopoeia.com)

[www.genecopoeia.com](http://www.genecopoeia.com)

## USER MANUAL

### ExProfile™ Gene qPCR Array

- I. Introduction
- II. Array Format and Layout
- III. Arrays and Reagents
- IV. Preparation
- V. Procedure
- VI. Data Analysis
- VII. Appendix I
- VIII. Appendix II
- IX. Limited Use License and Warranty

#### I. Introduction

The ExProfile™ Gene qPCR Arrays are designed for profiling the expressions of pre-defined or customized sets of coding-genes in various tissues or cells. The differential expressions of profiled genes help researchers to identify and/or validate those that are biologically significant and important for their research.

For catalog arrays, each 96-well plate contains up to 84 pairs of qPCR primers (each 384-well plate contains up to 360 pairs of qPCR primers), which have been pre-validated and coated in designated wells. In the same plate, there are 12 wells in 96-well plate (or 24 wells in 384-well plate) that contain different types of controls for monitoring the efficiency of the entire experimental process: from reverse transcription to qPCR reaction.

The All-in-One™ First-Strand cDNA Synthesis Kits for gene qPCR array (QP008, QP009) and the SYBR® Green-based All-in-One™ qPCR Mix (QP001, QP004, QP005) are the designed reagents for use with the ExProfile gene qPCR arrays. These reagents have been optimized to produce high sensitivity, efficiency, and specificity. Similar reagents from third-party vendors may be compatible with the arrays but not recommended.

#### Key advantages

- **Validated primers**  
Each pair of primers for a specific gene is designed using a proprietary algorithm and has been experimentally validated.
- **Robust performance**  
**Sensitive** – Detects as low as 4 copies of RNA using ExProfile gene qPCR array and recommended reagents/conditions.  
**Broad linearity** – Simultaneously detects mRNAs at different expression levels.  
**Reproducible** – High reproducibility ( $R^2 > 0.99$ ) for inter-array and intra-array replicates.
- **Genome-wide coverage for large selection of catalog and custom arrays**  
Catalog arrays for pathway analysis, cancer research and other focused studies  
Customized arrays for researcher-selected gene groups
- **Flexible compatibility**  
Arrays are available in multiple plate formats to ensure compatibility with most commercial RT-PCR instruments.

- **Convenient data analysis**  
Developed specially for ExProfile arrays, a data analysis tool is available for convenient data processing and statistical analysis.

**Protocol overview**

**A. Prepare cDNA from your RNA Samples**



**B. Add qPCR Mix and cDNA to the qPCR Array Plate**



**C. Perform real-time PCR**



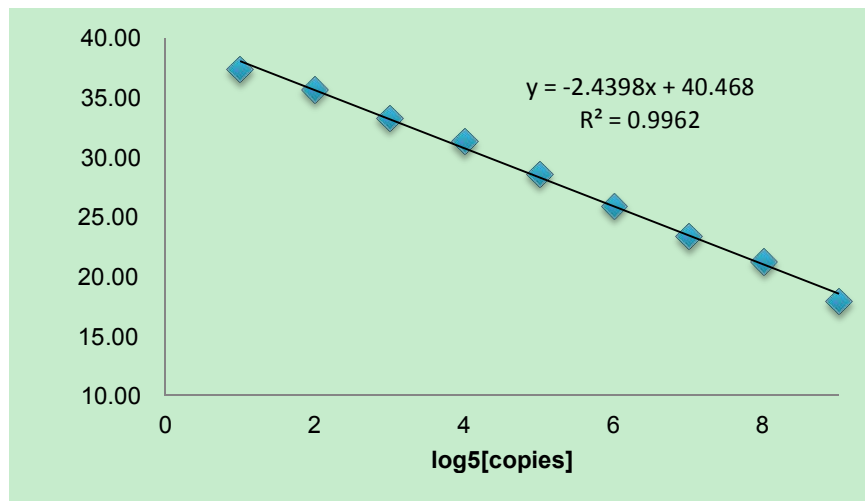
**D. Analyze the qPCR Results with GeneCopeia's Online Data Analysis System**

qPCR Array Catalog#		hsa-miR-57	Homo Brain Array Data(Sample)			Homo Liver Array Data(Control)			Fold Change	T test
No.	Accession#	miRNA ID	Q Value 1	Q Value 2	Q Value 3	Q Value 1	Q Value 2	Q Value 3	2 <sup>-6603</sup>	P Value
1	MMAT0004902	hsa-miR-539	26.27	26.80	26.32	23.79	30.06	30.29	112.69	1.31E-05
2	MMAT0004903	hsa-miR-487	27.14	27.15	27.36	20.84	30.79	30.95	98.55	3.97E-05
3	MMAT0004804	hsa-miR-415-5p	32.75	31.93	31.55	23.93	34.02	33.87	22.32	5.52E-05
4	MMAT0004636	hsa-miR-323-5p	20.32	20.25	20.82	27.68	27.81	27.59	1154.83	6.04E-06
5	MMAT0003234	hsa-miR-461	27.68	27.25	27.12	31.49	31.89	31.05	156.93	6.89E-05
6	MMAT0004983	hsa-miR-940	18.95	18.02	18.89	18.12	18.95	19.02	8.27	1.53E-04
7	MMAT0003206	hsa-miR-436	20.40	20.39	20.45	24.97	24.79	25.11	182.68	1.49E-05
8	MMAT0005867	hsa-miR-637b	27.41	27.39	27.42	22.89	22.40	22.59	6.29	1.81E-03
9	MMAT0002179	hsa-miR-487a	23.93	23.94	24.01	31.83	31.76	31.79	1701.40	5.72E-07
10	MMAT0002180	hsa-miR-487b	21.42	22.01	21.99	26.77	26.89	26.59	987.94	1.18E-05

Figure 1. Gene qPCR array experiment work flow

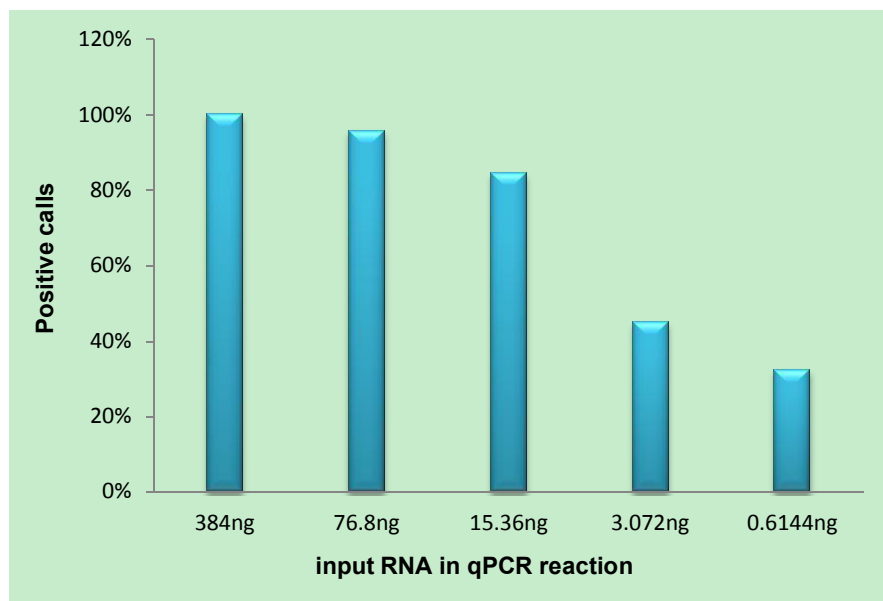
**Performance data**

**Linear Range and Sensitivity (spike-in control RNA)**



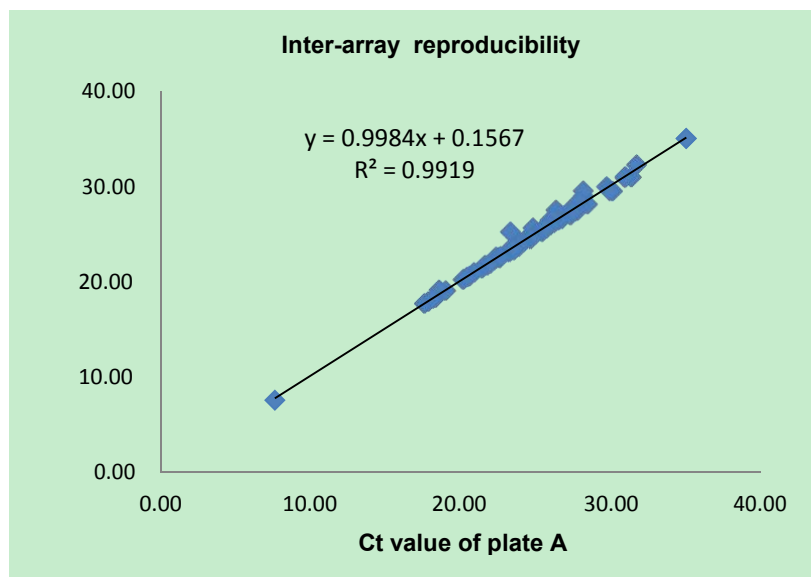
**Figure 2. Broad linear range and high sensitivity**

Mouse total RNA with serially diluted Spike-in control RNA were reverse-transcribed using All-in-One first strand cDNA synthesis kit. The reverse-transcribed cDNA samples were detected using All-in-One qPCR mix and spike-in control specific primers deposited in a 96-well plate. The resulting Ct values were plotted against the log5 of the amounts of spike-in control RNA. The data demonstrated a broad linear dynamic range from 4 to  $1.6 \times 10^6$  copies of input RNA as well as high sensitivity.



**Figure 3. High positive calls with as little as 15.36 ng of total RNA**

Different amounts of MCF\_7 total RNA (1000, 200, 40, 8, 1.6ng) were analyzed with the Human Breast Cancer Gene qPCR Array (cat.no: QG063). The percentage of positive calls (Ct < 35) is plotted against the input amount of total RNA in each qPCR reaction.



**Figure 4. High inter-array reproducibility**

Two ExProfile qPCR gene array replicates (plate A and B) were analyzed using human total RNA (10-tissue mix) on the Bio-Rad iQ5. The Ct values of the replicate plates were plotted against each other.  $R^2 > 0.99$  was observed for high inter-array reproducibility.  $R^2 > 0.99$  was also observed for intra-array reproducibility (data not shown).

## II. Array Format and Layout

### Array format options

**Important note:** Upon receiving, please check to make sure that the correct array format was ordered to ensure the compatibility with your qPCR instrument. GeneCopoeia provides five qPCR array formats (A, B, C, D, and E) suitable for use with the following real-time cyclers.

Plate format	Instrument provider	qPCR instrument model
<b>A</b> (96-well)	Applied Biosystems	5700, 7000, 7300, 7500, 7700, 7900HT (Standard 96-well block), ViiA™7 (Standard 96-well block)
<b>B</b> (96-well)	Applied Biosystems	7500 (Fast block), 7900HT (Fast block), StepOnePlus™, ViiA™7 (Fast block)
<b>C</b> (96-well)	Bio-Rad Laboratories	iCycler iQ®, MyiQ™, iQ™5
<b>D</b> (96-well)	Bio-Rad Laboratories	CFX96™, DNA Engine Opticon™, DNA Engine Opticon 2™, Chromo4™
<b>E</b> (96-well)	Roche Applied Science	LightCycler® 480 (96-well block)
<b>F</b> (384-well)	Applied Biosystems	7900HT (384-well block), ViiA 7 (384-well block)
<b>G</b> (384-well)	Bio-Rad Laboratories	Bio-Rad CFX384™ 384-well
<b>H</b> (384-well)	Roche Applied Science	Roche LightCycler 480 (384-well block)

### Catalog Array layout

	1	2	3	4	5	6	7	8	9	10	11	12
A	1	2	3	4	5	6	7	8	9	10	11	12
B	13	14	15	16	17	18	19	20	21	22	23	24
C	25	26	27	28	29	30	31	32	33	34	35	36
D	37	38	39	40	41	42	43	44	45	46	47	48
E	49	50	51	52	53	54	55	56	57	58	59	60
F	61	62	63	64	65	66	67	68	69	70	71	72
G	73	74	75	76	77	78	79	80	81	82	83	84
H	GDC	GDC	HK1	HK2	HK3	HK4	HK5	HK6	RT	RT	PCR	PCR

A

	1	2	3	4	5	6	7	8	9	10	11	12	13	14	15	16	17	18	19	20	21	22	23	24
A	1	2	3	4	5	6	7	8	9	10	11	12	13	14	15	16	17	18	19	20	21	22	23	24
B	25	26	27	28	29	30	31	32	33	34	35	36	37	38	39	40	41	42	43	44	45	46	47	48
C	49	50	51	52	53	54	55	56	57	58	59	60	61	62	63	64	65	66	67	68	69	70	71	72
D	73	74	75	76	77	78	79	80	81	82	83	84	85	86	87	88	89	90	91	92	93	94	95	96
E	97	98	99	100	101	102	103	104	105	106	107	108	109	110	111	112	113	114	115	116	117	118	119	120
F	121	122	123	124	125	126	127	128	129	130	131	132	133	134	135	136	137	138	139	140	141	142	143	144
G	145	146	147	148	149	150	151	152	153	154	155	156	157	158	159	160	161	162	163	164	165	166	167	168
H	169	170	171	172	173	174	175	176	177	178	179	180	181	182	183	184	185	186	187	188	189	190	191	192
I	193	194	195	196	197	198	199	200	201	202	203	204	205	206	207	208	209	210	211	212	213	214	215	216
J	217	218	219	220	221	222	223	224	225	226	227	228	229	230	231	232	233	234	235	236	237	238	239	240
K	241	242	243	244	245	246	247	248	249	250	251	252	253	254	255	256	257	258	259	260	261	262	263	264
L	265	266	267	268	269	270	271	272	273	274	275	276	277	278	279	280	281	282	283	284	285	286	287	288
M	289	290	291	292	293	294	295	296	297	298	299	300	301	302	303	304	305	306	307	308	309	310	311	312
N	313	314	315	316	317	318	319	320	321	322	323	324	325	326	327	328	329	330	331	332	333	334	335	336
O	337	338	339	340	341	342	343	344	345	346	347	348	349	350	351	352	353	354	355	356	357	358	359	360
P	GDC	GDC	GDC	GDC	HK1	HK1	HK2	HK2	HK3	HK3	HK4	HK4	HK5	HK5	HK6	HK6	RT	RT	RT	RT	PCR	PCR	PCR	PCR

B

Figure 5. Illustration of ExProfile™ gene qPCR array layout (A: 96-well plate, B: 384-well plate)

- **RNA primer pairs:** Wells 1-84 are designated for a real-time PCR assay for genes.
- **HK1-6:** Six pre-deposited housekeeping gene (HK1-6) primer pairs, which can be used as endogenous positive controls as well as for array normalization.
- **GDC:** Genomic DNA Controls, which can be used to specifically detect genomic DNA contamination with a high level of sensitivity.
- **RT:** Spike-in RNA reverse transcription controls, which can be used to monitor the efficiency of the RT reactions. These pre-deposited primer pairs specifically amplify the cDNA template reverse transcribed from the spike-in exogenous RNA in the sample.
- **PCR:** Positive PCR controls, which are used to verify the PCR efficiency by amplifying the pre-deposited DNA template with its specific pre-deposited primer pairs.

### III. Arrays and Reagents

#### Catalog arrays

For a complete list of catalog arrays, please see Appendix II or visit following webpage.

<http://www.genecopoeia.com/product/gene-qpcr-array/>.

#### RT-PCR and RNA extraction reagents (sold separately)

## ExProfile™ Gene qPCR Array User Manual

Cat. No.	Products	Quantity/set	Shipping and storage condition
QP008 QP009	All-in-One™ first-strand cDNA synthesis kit for Gene qPCR array	20 reactions 60 reactions	Shipped with an ice-pack Stable for at least 6 months when stored at -20 °C
QP001 QP004 QP005	All-in-One qPCR mix	200 reactions 1000 reactions 4000 reactions	Shipped with an ice-pack Stable for at least 6 months when stored at -20 °C
QP020	RNAzol® RT RNA isolation reagent	50 ml	Shipped at room temperature. Stable for at least two years when stored at room temperature.

### Other materials required but not provided

Total RNA extraction kit (RNAzol® RT RNA extraction reagent is recommended)  
 DNase/RNase free tips, PCR reaction tubes, 1.5 ml microcentrifuge tubes  
 5 ml and 10 ml graduated pipettes, beakers, flasks, and cylinders  
 10 µl to 1,000 µl adjustable single channel micropipettes with disposable tips  
 5 µl to 20 µl adjustable multichannel micropipette, disposable tips, and reservoir  
 qPCR instrument, compatible with gene qPCR arrays ordered

## IV. Preparation

### Important notes

1. Before use, remove any condensation that has accumulated on the plate sealing surface and centrifuge plates briefly to collect the contents to the bottom of the plate wells.
2. Strictly follow the standard procedures for qPCR to avoid nucleic acid contamination and non-specific amplifications.
3. Read the instructions thoroughly before attempting to perform the procedures.

### Estimates of RNA and number of RT-PCR reactions required for EACH SAMPLE

Array format	Number of plates per sample	Total RNA recommended per sample	Number of RT reactions per sample	Number of qPCR reactions per sample
96-well plate	2	0.04-2 µg	1	220
	5	0.12-6 µg	3	550
	10	0.2-10 µg	5	1,100
	20	0.4-20 µg	10	2,200
	40	0.8-40 µg	20	4,400
384-well plate	1	0.08-4 µg	2	450
	2	0.16-8 µg	4	900
	5	0.4-20 µg	10	2,250
	10	0.8-40 µg	20	4,500

### RNA quantification and quality control

1. Dilute the RNA sample with the RNase-free water and measure the absorbance at 260 nm and 280 nm. A260/280 should be greater than 1.8.



- Use the formula  $A_{260} \times \text{dilution} \times 40 = \mu\text{g RNA/mL}$  to determine the RNA concentration.
- Check the RNA integrity by agarose electrophoresis.

### Genomic DNA contamination control

The Genomic DNA Control (GDC) in each ExProfile gene qPCR array specifically tests for genomic DNA contamination in each sample during each qPCR performance. A Ct value of genomic DNA control less than 35 indicates the presence of a detectable amount of genomic DNA contamination that should be addressed. So it is necessary to remove genomic DNA and all residual contamination from your RNA samples.

## V. Procedure

### First-strand cDNA synthesis

**Note:** High-quality cDNA is a prerequisite for accurate detection of gene expression. It is important to remove genomic DNA and all residual contamination from your RNA samples before using our All-in-One First Strand cDNA Synthesis Kit.

- Thaw all reverse transcription reagents from the First Strand cDNA Synthesis Kit. Mix reagents well by gently inverting the tubes. Centrifuge briefly and place on ice.
- Prepare the RNA–primer mix: Add the following reagents to an RNase-free reaction tube that has been placed on ice. The final volume is 13 $\mu$ l.

Component	Volume	Final concentration
Total RNA		1 $\mu$ g <sup>a</sup>
Spike-in control RNA	1 $\mu$ l	0.08 ng
Random primer (250 $\mu$ M)	1 $\mu$ l	10 $\mu$ M <sup>b</sup>
Oligo (dT) <sub>18</sub> (60 $\mu$ M)	1 $\mu$ l	2.4 $\mu$ M
ddH <sub>2</sub> O(RNase/DNase free)	to final 13 $\mu$ l	

- The final concentration given is recommended. Each reaction can contain 10ng to 5 $\mu$ g total RNA. Low-abundance RNA may not be detected when using less than 10ng total RNA.
- Using both the Random Primer and the Oligo(dT)<sub>18</sub> primer is recommended for optimal reaction efficiency.

- Mix thoroughly and centrifuge briefly. Heat the RNA–primer mix (from step 2) at 65°C for 10 minutes to denature the RNA. After incubation, cool immediately on ice then centrifuge briefly.
- Prepare the reverse-transcription master mix, keeping the tubes (from step 3) on ice while working. The final volume is 25 $\mu$ l.

Component	Volume	Final concentration
RNA–primer mix	13 $\mu$ l	
5 $\times$ RT Reaction Buffer	5 $\mu$ l	1 $\times$
dNTP (25mM)	1 $\mu$ l	1mM
RNase Inhibitor(25 U/ $\mu$ l)	1 $\mu$ l	1U/ $\mu$ l
M-MLV RTase(200U/ $\mu$ l)	1 $\mu$ l	8U/ $\mu$ l
ddH <sub>2</sub> O (RNase/DNase free)	to final 25 $\mu$ l	



- Prepare the reverse transcription reaction by adding the reverse-transcription master mix to the RNA–primer mixture. Mix thoroughly and centrifuge briefly. Incubate at 37°C for 60 minutes.
- Terminate the reaction by heating at 85°C for 5 minutes.
- Add 225µl sterile water to each 25µl of reverse transcription reaction (1:10dilution). Mix thoroughly and centrifuge briefly.

### qPCR reaction

**Note:** Be sure the ExProfile gene qPCR Array plate is compatible with your qPCR instrument before beginning this protocol.

- Thaw the reagents of All-in-One qPCR Mix Kit. Invert the tubes to mix gently but thoroughly. Briefly centrifuge to bring the contents to the bottom of the tubes and then place them on ice.
- Remove any condensation that has accumulated on the plate sealing surface and centrifuge briefly to collect the contents to the bottom of the plate wells. Carefully remove sealing film before use 96-Well qPCR.
- Prepare qPCR solution on ice

Components	1 well	N well <sup>a</sup>
2×All-in-One qPCR Mix	10µl	11µl × N
cDNA ( 10 times dilution )	1µl	1.1µl × N
50 X Rox Reference Dye <sup>b</sup>	0.4µl	0.44µl× N
ddH <sub>2</sub> O		
■ Not using Rox Reference Dye	9µl	9.9µl× N
■ Using Rox Reference Dye	8.6µl	9.5µl× N
Final Volume	20µl	22µl× N

- The ExProfile gene qPCR array is used to detect multiple genes simultaneously in the same sample. Ensure sufficient mix is available by preparing enough for the number of reactions to be used with a 10% additional volume for pipetting loss.
- 50×Rox Reference Dye is added only for qPCR instruments that require ROX for calibration.

- Mix the qPCR solution thoroughly and centrifuge briefly. Accurately transfer exactly 20 µl reaction mix to each well. Change tips after each transfer to avoid cross-contamination.
- Tightly seal the qPCR reaction plate with a new sealing film, Ensure that the film seals smoothly to prevent refraction of light, and tightly to prevent from evaporation loss. Centrifuge briefly in order to remove bubbles.
- Run qPCR. The following three-step PCR program is recommended for running qPCR.

Cycles	Steps	Temperature	Duration	Detection
1	Initial denaturation	95°C	10min <sup>a</sup>	No
40	Denaturation	95°C	10sec.	No
	Annealing	60°C <sup>b</sup>	20 sec.	No
	Extension	72°C <sup>c</sup>	15 sec.	Yes

- The DNA polymerase used in the 2X All-in-One qPCR Mix is a special chemically modified hot-start enzyme. The indicated initial denaturation is sufficient to activate the enzyme.
- The annealing temperature of the cross-linked primer is 60°C when using the optimized All-in-One qPCR Mix.
- The extension time indicated above is suitable for Bio-Rad's iQ5 real-time PCR instrument. Adjust the time duration according to the documentation provided with your instrument.

When using SYBR Green dye to monitor the qPCR reaction, a melting curve analysis should be performed immediately after qPCR cycling

Temperature range	Heating rate	Constant temperature	Detection
72°C~95°C	0.5°C/unit time	10sec./unit time	Yes
25°C		30 sec	No

## VI. Data Analysis

1. Define the baseline  
The baseline is the noise level in early cycles. Each real-time PCR instrument has algorithms to perform the baseline-setting. This may be a fixed number of cycles for all samples or adaptive for each sample, depending on the type of instrument that is being used. If the lowest Ct is less than the upper limit of the baseline setting, then the baseline should be manually adjusted. Use the “Linear View” of the amplification plot to determine the earliest visible amplification, and then set the baseline from cycle 2 to two cycles before the earliest visible amplification. Normally it is between 2 to 10 cycles. Do not use cycles greater than 15.  
Ensure that baseline settings are the same across all PCR runs in the same analysis to allow comparison of results.
2. Set threshold  
Correct placement of the threshold is the next crucial step in data analysis. To adjust the threshold properly, set the threshold value within the exponential phase of all amplification plots when viewed using the logarithmic scale for the y axis. Generally, the expression level of each reference gene should be higher than most other genes.
3. Obtain the Ct or Cp values  
The Ct is defined as the cycle when sample fluorescence exceeds a chosen threshold above background fluorescence. This is also known as the Cp or crossing point.
4. Export the data. Most qPCR instruments provide a function for exporting Ct or Cp values to Excel.
5. Analyze the qPCR results using the  $\Delta\Delta C_t$  method of relative quantification and interpretation of the control wells.
6. All Ct values reported as greater than 35 or as N/A (not detected) are considered as not detectable.

### QC analysis

1. Examined amplification and melting status of each gene using the qPCR instrument software. Each reference gene, RT control and PCR control should exhibit only one melting peak per reaction.
2. Examined CT values of the genomic DNA contamination wells (GDC).  
A CT values of genomic DNA control should be more than **35**, which indicate a little of genomic DNA contamination can not effect the real-time gene expression profiling result.
3. Examined CT values of the RT control and positive PCR control wells (PCR).  
If the RNA sample is of high quality, the cycling program has been correctly run, and the thresholds have been correctly defined, the value of Ct of RT control should be **20±3**, and the value of Ct of PCR should be **20±2** across all arrays or samples.

### Data analysis

Analyze the qPCR result with GeneCopia's online Data Analysis System (free), which is available at [http://www.genecopia.com/product/gene-qpcr-array/#Analysis\\_Tool](http://www.genecopia.com/product/gene-qpcr-array/#Analysis_Tool).

This Data Analysis System uses the  $\Delta\Delta C_t$  method to perform fold-change analysis or simple statistical analysis of the expression level ( $C_t$  or  $C_p$  values) for each gene.

1. Download and read the “Primer Array Data Analysis Operation Guide” before performing analysis.

- Import the  $C_t$  or  $C_p$  values into the corresponding data analysis template form (*Sample Data.xls* and *Control Data.xls*). Upload the template form and choose the correct reference and analysis factors.  
**Note:** The reference factor chosen for qPCR Primer Array for normalization with the  $\Delta\Delta C_t$  method must not be influenced by the experimental design. Therefore use one or more factors that have been previously verified experimentally. A single value or an average of the  $C_t$  values for the reference factor can be used for normalization.
- Perform the specified analysis. When a test is repeated at least three times, statistical results (p value) are provided. The analysis results allow genes of interest to be simply and rapidly selected for further study.

## VII. Appendix I

### $\Delta\Delta C_t$ data analysis method

$\Delta\Delta C_t$  data analysis, a relative quantitative analysis technique, is the most simple and direct method for gene expression analyses. The method requires stable expression from a reference gene to normalize the variation introduced by each step, including sample collection, RNA isolation, reverse transcription and amplification. Typically housekeeping genes are used as reference genes.

In qPCR, as in any amplification-based technique, the number of amplification products (N) is calculated as follows:

$$N = N_0 \times (1 + E)^{C_t}$$

$N_0$ : number of template molecules

$C_t$ : threshold cycle

E: amplification efficiency

When the amplification efficiency E is 100%, the number of template molecules in pre-amplification mix is calculated as follows:

$$N_0 = N \times 2^{-C_t}$$

To analyze the change in expression level for the gene of interest in multiple samples using the  $\Delta\Delta C_t$  method, the amount of the amplification template from different samples is normalized by dividing the expression level of the gene of interest (x) with the reference factor (r) as follows:

$$N_{rel} = N_{0x}/N_{0r} = N \times 2^{-C_{tx}} / N \times 2^{-C_{tr}} = 2^{-(C_{tx} - C_{tr})} = 2^{-\Delta C_t}$$

The change in normalized expression levels of the gene of interest (x) between experimental sample (sample 1) and the control sample (sample 2) is as follows:

$$N_{rel1}/N_{rel2} = 2^{-\Delta C_{t1}} / 2^{-\Delta C_{t2}} = 2^{-(\Delta C_{t1} - \Delta C_{t2})} = 2^{-\Delta\Delta C_t}$$

The value of  $2^{-\Delta\Delta C_t}$  is the change in expression level of the gene of interest between different samples.

## VIII. Appendix II

### Catalog ExProfile gene qPCR array list

## ExProfile™ Gene qPCR Array User Manual

Cat.No.	qPCR array products	Quantity/set	Shipping and storage condition
QG001	ExProfile™ Human Autophagy Related Gene qPCR Array	84 genes 1 x 96-well plate	Shipped at room temperature Stable for at least 6 months when stored at -20°C
QG002	ExProfile™ Human Angiogenesis Related Gene qPCR Array	84 genes 1 x 96-well plate	Shipped at room temperature Stable for at least 6 months when stored at -20°C
QG003	ExProfile™ Human Antigen Processing & Presentation Related Gene qPCR Array	84 genes 1 x 96-well plate	Shipped at room temperature Stable for at least 6 months when stored at -20°C
QG004	ExProfile™ Human AMPK Signaling Related Gene qPCR Array	336 genes 4 x 96-well plate	Shipped at room temperature Stable for at least 6 months when stored at -20°C
QG005	ExProfile™ Human Breast Cancer & Estrogen Receptor Signaling Related Gene qPCR Array	84 genes 1 x 96-well plate	Shipped at room temperature Stable for at least 6 months when stored at -20°C
QG006	ExProfile™ Human Cell Cycle Related Gene qPCR Array	84 genes 1 x 96-well plate	Shipped at room temperature Stable for at least 6 months when stored at -20°C
QG007	ExProfile™ Human Cancer Drug Resistance & Metabolism Related Gene qPCR Array	84 genes 1 x 96-well plate	Shipped at room temperature Stable for at least 6 months when stored at -20°C
QG008	ExProfile™ Human Cytokine Receptor Related Gene qPCR Array	84 genes 1 x 96-well plate	Shipped at room temperature Stable for at least 6 months when stored at -20°C
QG009	ExProfile™ Human cAMP/Ca2+ Signaling Related Gene qPCR Array	84 genes 1 x 96-well plate	Shipped at room temperature Stable for at least 6 months when stored at -20°C
QG010	ExProfile™ Human Dendritic & Antigen Presenting Cell Related Gene qPCR Array	84 genes 1 x 96-well plate	Shipped at room temperature Stable for at least 6 months when stored at -20°C
QG011	ExProfile™ Human Drug Metabolism Related Gene qPCR Array	84 genes 1 x 96-well plate	Shipped at room temperature Stable for at least 6 months when stored at -20°C
QG012	ExProfile™ Human DNA Damage and Repair Related Gene qPCR Array	84 genes 1 x 96-well plate	Shipped at room temperature Stable for at least 6 months when stored at -20°C
QG013	ExProfile™ Human Extracellular Matrix and Adhesion Molecules Related Gene qPCR Array	84 genes 1 x 96-well plate	Shipped at room temperature Stable for at least 6 months when stored at -20°C
QG014	ExProfile™ Human Electron Transport Toxicology Related Gene qPCR Array	84 genes 1 x 96-well plate	Shipped at room temperature Stable for at least 6 months when stored at -20°C
QG015	ExProfile™ Human EGF/PDGF Signaling Related Gene qPCR Array	84 genes 1 x 96-well plate	Shipped at room temperature Stable for at least 6 months when stored at -20°C
QG016	ExProfile™ Human Embryonic Stem Cells Related Gene qPCR Array	84 genes 1 x 96-well plate	Shipped at room temperature Stable for at least 6 months when stored at -20°C
QG017	ExProfile™ Human Endothelial Cell Biology Related Gene qPCR Array	84 genes 1 x 96-well plate	Shipped at room temperature Stable for at least 6 months when stored at -20°C

## ExProfile™ Gene qPCR Array User Manual

QG018	ExProfile™ Human FoxP3 Target Genes qPCR Array	84 genes 1 x 96-well plate	Shipped at room temperature Stable for at least 6 months when stored at -20°C
QG019	ExProfile™ Human Angiogenic Growth Factors & Angiogenesis Inhibitors Related Gene qPCR Array	84 genes 1 x 96-well plate	Shipped at room temperature Stable for at least 6 months when stored at -20°C
QG020	ExProfile™ Human General Toxicology Related Gene qPCR Array	336 genes 4 x 96-well plate	Shipped at room temperature Stable for at least 6 months when stored at -20°C
QG021	ExProfile™ Human Growth and Development Toxicity Related Gene qPCR Array	84 genes 1 x 96-well plate	Shipped at room temperature Stable for at least 6 months when stored at -20°C
QG022	ExProfile™ Human Hedgehog Signaling Related Gene qPCR Array	84 genes 1 x 96-well plate	Shipped at room temperature Stable for at least 6 months when stored at -20°C
QG023	ExProfile™ Human HIV Infection and Host Response Related Gene qPCR Array	84 genes 1 x 96-well plate	Shipped at room temperature Stable for at least 6 months when stored at -20°C
QG024	ExProfile™ Human Insulin Signaling Related Gene qPCR Array	84 genes 1 x 96-well plate	Shipped at room temperature Stable for at least 6 months when stored at -20°C
QG025	ExProfile™ Human Hematopoietic Stem Cells and Hematopoiesis Related Gene qPCR Array	84 genes 1 x 96-well plate	Shipped at room temperature Stable for at least 6 months when stored at -20°C
QG026	ExProfile™ Human Hypoxia Signaling Related Gene qPCR Array	84 genes 1 x 96-well plate	Shipped at room temperature Stable for at least 6 months when stored at -20°C
QG027	ExProfile™ Human Innate & Adaptive Immune Response Related Gene qPCR Array	84 genes 1 x 96-well plate	Shipped at room temperature Stable for at least 6 months when stored at -20°C
QG028	ExProfile™ Human Inflammatory Cytokines & Receptors Related Gene qPCR Array	84 genes 1 x 96-well plate	Shipped at room temperature Stable for at least 6 months when stored at -20°C
QG029	ExProfile™ Human Interferon Signaling & Response Related Gene qPCR Array	84 genes 1 x 96-well plate	Shipped at room temperature Stable for at least 6 months when stored at -20°C
QG030	ExProfile™ Human Innate Immune Signaling Related Gene qPCR Array	84 genes 1 x 96-well plate	Shipped at room temperature Stable for at least 6 months when stored at -20°C
QG031	ExProfile™ Human Immunology Related Gene qPCR Array	336 genes 4 x 96-well plate	Shipped at room temperature Stable for at least 6 months when stored at -20°C
QG032	ExProfile™ Human Interferon Related Gene qPCR Array	84 genes 1 x 96-well plate	Shipped at room temperature Stable for at least 6 months when stored at -20°C
QG033	ExProfile™ Human Immune Complement Related Gene qPCR Array	84 genes 1 x 96-well plate	Shipped at room temperature Stable for at least 6 months when stored at -20°C
QG034	ExProfile™ Human JAK/STAT Signaling Related Gene qPCR Array	84 genes 1 x 96-well plate	Shipped at room temperature Stable for at least 6 months when stored at -20°C
QG035	ExProfile™ Human NFκB Signaling Pathway Related Gene qPCR Array	84 genes 1 x 96-well plate	Shipped at room temperature Stable for at least 6 months when stored at -20°C

## ExProfile™ Gene qPCR Array User Manual

QG036	ExProfile™ Human Lipoprotein Signaling & Cholesterol Metabolism Related Gene qPCR Array	84 genes 1 x 96-well plate	Shipped at room temperature Stable for at least 6 months when stored at -20°C
QG037	ExProfile™ Human Tumor Necrosis Factor (TNF) Ligand and Receptor Related Gene qPCR Array	84 genes 1 x 96-well plate	Shipped at room temperature Stable for at least 6 months when stored at -20°C
QG038	ExProfile™ Human MAP Kinase Signaling Related Gene qPCR Array	84 genes 1 x 96-well plate	Shipped at room temperature Stable for at least 6 months when stored at -20°C
QG039	ExProfile™ Human Neuroscience Ion Channels & Transporters Related Gene qPCR Array	84 genes 1 x 96-well plate	Shipped at room temperature Stable for at least 6 months when stored at -20°C
QG040	ExProfile™ Human Nuclear Receptors and Coregulators Related Gene qPCR Array	84 genes 1 x 96-well plate	Shipped at room temperature Stable for at least 6 months when stored at -20°C
QG041	ExProfile™ Human Nitric Oxide Signaling Related Gene qPCR Array	84 genes 1 x 96-well plate	Shipped at room temperature Stable for at least 6 months when stored at -20°C
QG042	ExProfile™ Human Neurogenesis and Neural Stem Cell Related Gene qPCR Array	84 genes 1 x 96-well plate	Shipped at room temperature Stable for at least 6 months when stored at -20°C
QG043	ExProfile™ Human Notch Signaling Related Gene qPCR Array	84 genes 1 x 96-well plate	Shipped at room temperature Stable for at least 6 months when stored at -20°C
QG044	ExProfile™ Human Neurotransmitter Receptors and Regulators Related Gene qPCR Array	84 genes 1 x 96-well plate	Shipped at room temperature Stable for at least 6 months when stored at -20°C
QG045	ExProfile™ Human Oxidative Stress and Antioxidant Defense Related Gene qPCR Array	84 genes 1 x 96-well plate	Shipped at room temperature Stable for at least 6 months when stored at -20°C
QG046	ExProfile™ Human Osteogenesis Related Gene qPCR Array	84 genes 1 x 96-well plate	Shipped at room temperature Stable for at least 6 months when stored at -20°C
QG047	ExProfile™ Human PI3K-AKT Signaling Related Gene qPCR Array	84 genes 1 x 96-well plate	Shipped at room temperature Stable for at least 6 months when stored at -20°C
QG048	ExProfile™ Human Inflammatory Response and Autoimmunity Related Gene qPCR Array	84 genes 1 x 96-well plate	Shipped at room temperature Stable for at least 6 months when stored at -20°C
QG049	ExProfile™ Human Stem Cell Related Gene qPCR Array	420 genes 5 x 96-well plate	Shipped at room temperature Stable for at least 6 months when stored at -20°C
QG050	ExProfile™ Human Stress & Toxicity Related Gene qPCR Array	84 genes 1 x 96-well plate	Shipped at room temperature Stable for at least 6 months when stored at -20°C
QG051	ExProfile™ Human Signal Transduction Related Gene qPCR Array	84 genes 1 x 96-well plate	Shipped at room temperature Stable for at least 6 months when stored at -20°C
QG052	ExProfile™ Human T-cell and B-cell Activation Related Gene qPCR Array	84 genes 1 x 96-well plate	Shipped at room temperature Stable for at least 6 months when stored at -20°C
QG053	ExProfile™ Human Cell Cycle Toxicity and Cancer Related Gene qPCR Array	84 genes 1 x 96-well plate	Shipped at room temperature Stable for at least 6 months when stored at -20°C



## ExProfile™ Gene qPCR Array User Manual

QG054	ExProfile™ Human TGF- $\beta$ Signaling Related Gene qPCR Array	84 genes 1 x 96-well plate	Shipped at room temperature Stable for at least 6 months when stored at -20°C
QG055	ExProfile™ Human Th1-Th2-Th3 Related Gene qPCR Array	84 genes 1 x 96-well plate	Shipped at room temperature Stable for at least 6 months when stored at -20°C
QG056	ExProfile™ Human Tumor Metastasis Related Gene qPCR Array	84 genes 1 x 96-well plate	Shipped at room temperature Stable for at least 6 months when stored at -20°C
QG057	ExProfile™ Human T Cell Anergy & Immune Tolerance Related Gene qPCR Array	84 genes 1 x 96-well plate	Shipped at room temperature Stable for at least 6 months when stored at -20°C
QG058	ExProfile™ Human T helper 17 (Th17) Related Gene qPCR Array	84 genes 1 x 96-well plate	Shipped at room temperature Stable for at least 6 months when stored at -20°C
QG059	ExProfile™ Human Ubiquitination (Ubiquitylation) Related Gene qPCR Array	84 genes 1 x 96-well plate	Shipped at room temperature Stable for at least 6 months when stored at -20°C
QG060	ExProfile™ Human Targets of Wnt/ $\beta$ -catenin Signaling Related Gene qPCR Array	84 genes 1 x 96-well plate	Shipped at room temperature Stable for at least 6 months when stored at -20°C
QG061	Exprofile™ Human Adenocarcinoma Gene qPCR Array	168 genes 2 x 96-well plate	Shipped at room temperature Stable for at least 6 months when stored at -20°C
QG062	Exprofile™ Human Brain Cancer Gene qPCR Array	252 genes 3 x 96-well plate	Shipped at room temperature Stable for at least 6 months when stored at -20°C
QG063	Exprofile™ Human Breast Cancer Gene qPCR Array	504 genes 6 x 96-well plate	Shipped at room temperature Stable for at least 6 months when stored at -20°C
QG064	Exprofile™ Human Bladder Cancer Gene qPCR Array	420 genes 5 x 96-well plate	Shipped at room temperature Stable for at least 6 months when stored at -20°C
QG065	Exprofile™ Human Colorectal Cancer Gene qPCR Array	336 genes 4 x 96-well plate	Shipped at room temperature Stable for at least 6 months when stored at -20°C
QG066	Exprofile™ Human Cervical Cancer Gene qPCR Arrays	84 genes 1 x 96-well plate	Shipped at room temperature Stable for at least 6 months when stored at -20°C
QG067	Exprofile™ Human Endometrial Cancer Gene qPCR Arrays	252 genes 3 x 96-well plate	Shipped at room temperature Stable for at least 6 months when stored at -20°C
QG068	Exprofile™ Human Head and Neck Cancer Gene qPCR Array	504 genes 6 x 96-well plate	Shipped at room temperature Stable for at least 6 months when stored at -20°C
QG069	Exprofile™ Human Kidney Cancer Gene qPCR Array	84 genes 1 x 96-well plate	Shipped at room temperature Stable for at least 6 months when stored at -20°C
QG070	Exprofile™ Human Leukemia Gene qPCR Array	504 genes 6 x 96-well plate	Shipped at room temperature Stable for at least 6 months when stored at -20°C
QG071	Exprofile™ Human Lung Cancer Gene qPCR Array	504 genes 6 x 96-well plate	Shipped at room temperature Stable for at least 6 months when stored at -20°C

## ExProfile™ Gene qPCR Array User Manual

QG072	Exprofile™ Human Liver Cancer Gene qPCR Array	168 genes 2 x 96-well plate	Shipped at room temperature Stable for at least 6 months when stored at -20°C
QG073	Exprofile™ Human Lymphoma Gene qPCR Array	420 genes 5 x 96-well plate	Shipped at room temperature Stable for at least 6 months when stored at -20°C
QG074	Exprofile™ Human Myeloma Gene qPCR Array	84 genes 1 x 96-well plate	Shipped at room temperature Stable for at least 6 months when stored at -20°C
QG075	Exprofile™ Human Ovarian Cancer Gene qPCR Array	336 genes 4 x 96-well plate	Shipped at room temperature Stable for at least 6 months when stored at -20°C
QG076	Exprofile™ Human Pancreatic Cancer Gene qPCR Array	168 genes 2 x 96-well plate	Shipped at room temperature Stable for at least 6 months when stored at -20°C
QG077	Exprofile™ Human Prostate Cancer Gene qPCR Array	412 genes 5 x 96-well plate	Shipped at room temperature Stable for at least 6 months when stored at -20°C
QG078	Exprofile™ Human Skin Cancer Gene qPCR Array	252 genes 3 x 96-well plate	Shipped at room temperature Stable for at least 6 months when stored at -20°C
QG079	Exprofile™ Human Stomach Cancer Gene qPCR Array	168 genes 2 x 96-well plate	Shipped at room temperature Stable for at least 6 months when stored at -20°C
QG080	Exprofile™ Human Thyroid Cancer Gene qPCR Array	84 genes 1 x 96-well plate	Shipped at room temperature Stable for at least 6 months when stored at -20°C
QG081	Exprofile™ Human Testicular Cancer Gene qPCR Array	84 genes 1 x 96-well plate	Shipped at room temperature Stable for at least 6 months when stored at -20°C
QG082	ExProfile™ Human Huntingtons Disease Related Gene qPCR Array	84 genes 1 x 96-well plate	Shipped at room temperature Stable for at least 6 months when stored at -20°C
QG083	ExProfile™ Human Mood Disorder Related Gene qPCR Array	336 genes 4 x 96-well plate	Shipped at room temperature Stable for at least 6 months when stored at -20°C
QG084	ExProfile™ Human Neurodegeneration Related Gene qPCR Array	84 genes 1 x 96-well plate	Shipped at room temperature Stable for at least 6 months when stored at -20°C
QG085	ExProfile™ Human Blood Coagulation Related Gene qPCR Array	84 genes 1 x 96-well plate	Shipped at room temperature Stable for at least 6 months when stored at -20°C
QG086	ExProfile™ Human Chemokines & Receptors Related Gene qPCR Array	84 genes 1 x 96-well plate	Shipped at room temperature Stable for at least 6 months when stored at -20°C
QG087	ExProfile™ Human Drug Transporters Related Gene qPCR Array	84 genes 1 x 96-well plate	Shipped at room temperature Stable for at least 6 months when stored at -20°C
QG088	ExProfile™ Human Growth Factor Related Gene qPCR Array	84 genes 1 x 96-well plate	Shipped at room temperature Stable for at least 6 months when stored at -20°C
QG089	ExProfile™ Human Histone Modification Enzyme Related Gene qPCR Array	84 genes 1 x 96-well plate	Shipped at room temperature Stable for at least 6 months when stored at -20°C

## ExProfile™ Gene qPCR Array User Manual

QG090	ExProfile™ Human Heat Shock Proteins Related Gene qPCR Array	84 genes 1 x 96-well plate	Shipped at room temperature Stable for at least 6 months when stored at -20°C
QG091	ExProfile™ Human Ion Channels Related Gene qPCR Array	336 genes 4 x 96-well plate	Shipped at room temperature Stable for at least 6 months when stored at -20°C
QG092	ExProfile™ Human Nuclear Hormone Receptors Related Gene qPCR Array	84 genes 1 x 96-well plate	Shipped at room temperature Stable for at least 6 months when stored at -20°C
QG093	ExProfile™ Human Neurotrophin and Receptors Related Gene qPCR Array	84 genes 1 x 96-well plate	Shipped at room temperature Stable for at least 6 months when stored at -20°C
QG094	ExProfile™ Human Protein Phosphatases Related Gene qPCR Array	168 genes 2 x 96-well plate	Shipped at room temperature Stable for at least 6 months when stored at -20°C
QG095	ExProfile™ Human Protein Kinases Related Gene qPCR Array	504 genes 6 x 96-well plate	Shipped at room temperature Stable for at least 6 months when stored at -20°C
QG096	ExProfile™ Human Proteases Related Gene qPCR Array	504 genes 6 x 96-well plate	Shipped at room temperature Stable for at least 6 months when stored at -20°C
QG097	ExProfile™ Human Surface Antigens (CD) Related Gene qPCR Array	252 genes 3 x 96-well plate	Shipped at room temperature Stable for at least 6 months when stored at -20°C
QG098	ExProfile™ Human Cell Surface Markers Related Gene qPCR Array	84 genes 1 x 96-well plate	Shipped at room temperature Stable for at least 6 months when stored at -20°C

**Note:** New catalog ExProfile gene qPCR arrays will be continuously added to the product line. Check out <http://www.genecopoeia.com//product/gene-qpcr-array/>

## IX. Limited Use License and Warranty

### Limited use license

Following terms and conditions apply to use of ExProfile™ Gene qPCR Arrays (the Products). If the terms and conditions are not acceptable, the Product in its entirety must be returned to GeneCopoeia within 5 calendar days. A limited End-User license is granted to the purchaser of the Product. The Product shall be used by the purchaser for internal research purposes only. The Product is expressly not designed, intended, or warranted for use in humans or for therapeutic or diagnostic use. The Product must not be resold, repackaged or modified for resale, or used to manufacture commercial products or deliver information obtained in service without prior written consent from GeneCopoeia. This Product should be used in accordance with the NIH guidelines developed for recombinant DNA and genetic research. Use of any part of the Product constitutes acceptance of the above terms.

### Limited warranty

GeneCopoeia warrants that the Product meets the specifications described in the accompanying Product Datasheet. If it is proven to the satisfaction of GeneCopoeia that the Product fails to meet these specifications, GeneCopoeia will replace the Product. In the event a replacement cannot be provided, GeneCopoeia will provide the purchaser with a refund. This limited warranty shall not extend to anyone other than the original purchaser of the Product. Notice of nonconforming products must be made to GeneCopoeia within 30 days of receipt of the Product. GeneCopoeia's liability is expressly limited to replacement of Product or a refund limited to the actual purchase price. GeneCopoeia's liability does not extend to any damages arising from use or improper use of the Product, or losses associated with the use of additional materials or reagents. This limited warranty is the sole and exclusive warranty. GeneCopoeia does not provide any other warranties of any kind, expressed or implied, including the merchantability or fitness of the Product for a particular purpose.

GeneCopoeia is committed to providing our customers with high-quality products. If you should have any questions or concerns about any GeneCopoeia products, please contact us at 301-762-0888.

© 2016 GeneCopoeia, Inc.

GeneCopoeia, Inc.  
9620 Medical Center Drive, Suite 101  
Rockville, MD 20850  
+1 (301) 762-0888  
+1 (866) 360-9531  
[support@genecopoeia.com](mailto:support@genecopoeia.com)