

HQPAVSHR-3 Datasheet

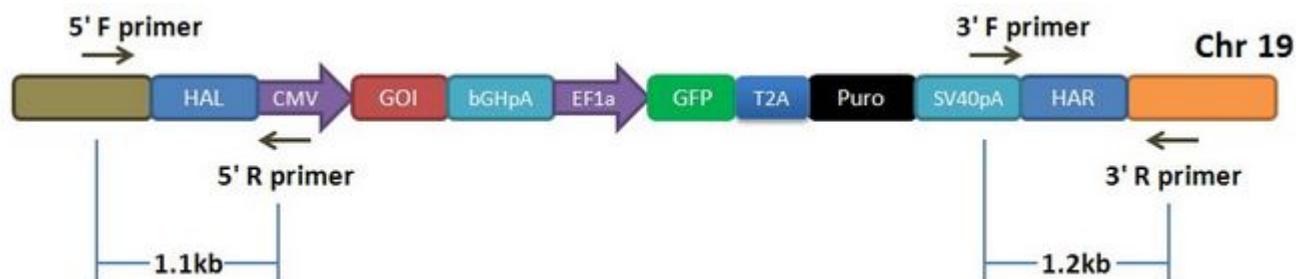
Primer Information

Catalog No.: HQPAVSHR-3

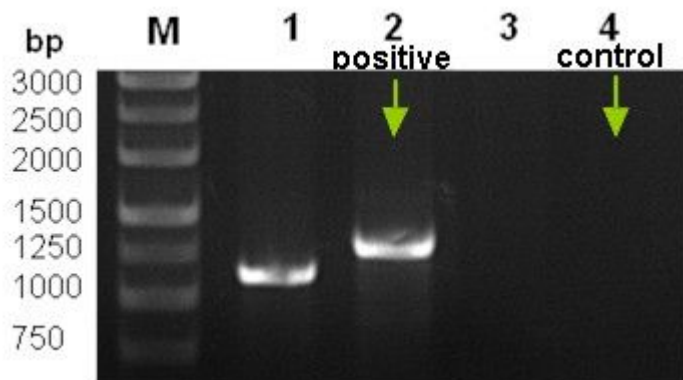
Description: 3' Junction-PCR Primer Set

Forward Primer: 5'-AGCTATCTGGTCTCCCTTCC-3'

Reverse Primer: 5'-TCCTGGGATACCCCGAAGAG-3'



Note: PCR primers designed to amplify the HR junction were used to verify the successful integration.



Note: Positive (Lane 2) and negative control (Lane 4) PCR products were run on the 1% Agarose/EtBr gel.
