

# EndoFectin™ Transfection Reagents

## Overview

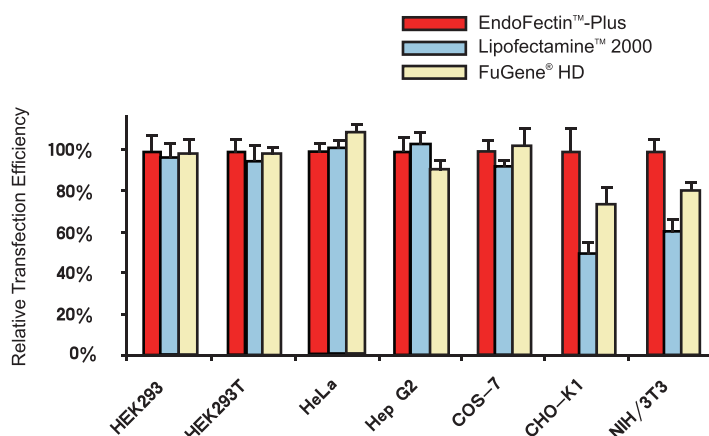
Developed by GeneCopoeia for fast, efficient transfection of expression-ready constructs into a variety of cell lines, EndoFectin™ reagents offer researchers transfection solutions that are gentle on cells and optimized for specific cell types.

**EndoFectin™ Plus** – For a broad range of routinely used mammalian cells, including HEK293, CHO, COS, NIH/3T3 cells and more

**EndoFectin™ CHO** – For Chinese hamster ovary cells

**EndoFectin™ Max** – For adherent and suspension cell lines

**EndoFectin™ Lenti** – For co-transfection of lentiviral expression constructs and plasmids into packaging cells to deliver high titers for lentivirus transduction



**Figure 1.** A EGFP-expressing plasmid was transfected into various cell lines using transfection reagents as indicated. Transfection efficiencies were assessed by measuring the percentage of EGFP-expressing cells which were normalized against those produced by EndoFectin Plus. Lipofectamine™ 2000 (LF 2000) is a trademark of Invitrogen; FuGENE® HD is a trademark of Roche.

## Advantages

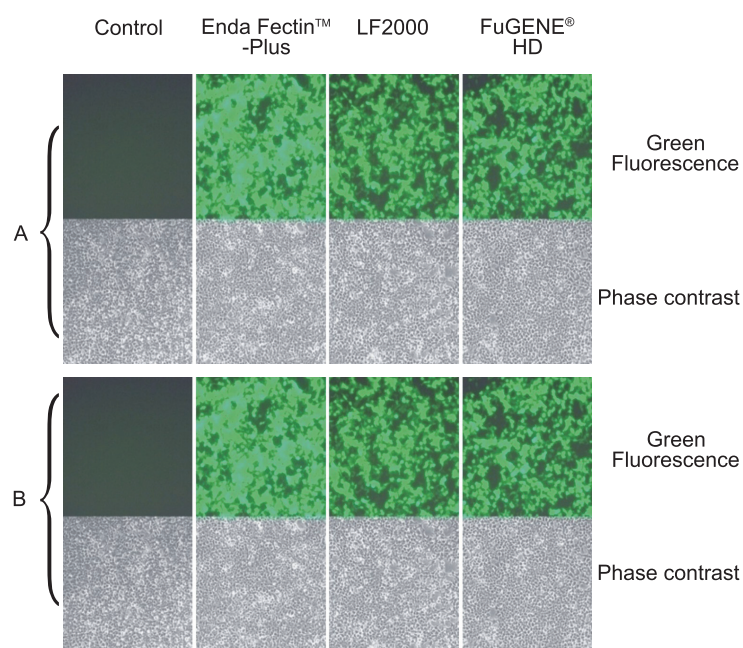
### Efficient

- High transfection efficiency and protein expression
- Easy to use and time-saving
- Extremely low cytotoxicity
- More cost effective

### Reproducible

- Provide consistently high transfection efficiency

# EndoFectin™ Transfection Reagents



**Figure 2.** HEK293T cells were transfected with an EGFP-expressing plasmid using various transfection reagents as indicated. The cells were observed with inverted fluorescence microscope 20 hours after transfection. HEK293T cells were transfected either in serum-free medium (A) or in 10% serum (B). Lipofectamine™ 2000 (LF 2000) is a trademark of Invitrogen; FuGENE® HD is a trademark of Roche.

Catalog number	Product
EFL1001-01 EFL1001-02	EndoFectin™ Lenti (1 ml or 5 ml)
EFC1002-01 EFC1002-02	EndoFectin™ CHO (1 ml or 5 ml)
EFP1003-01 EFP1003-02	EndoFectin™ Plus (1 ml or 5 ml)
EFM1004-01 EFM1004-02	EndoFectin™ MAX (1 ml or 5 ml)

## To order

Please visit [www.genecopoeia.com](http://www.genecopoeia.com) or contact us directly.

### GeneCopoeia, Inc.

9620 Medical Center Drive, Suite 101  
Rockville, MD 20850, USA

Email [inquiry@genecopoeia.com](mailto:inquiry@genecopoeia.com)

Tel +1 (301) 762-0888

Toll free +1 (866) 360-9531

Fax +1 (301) 762-3888

Website [www.genecopoeia.com](http://www.genecopoeia.com)