

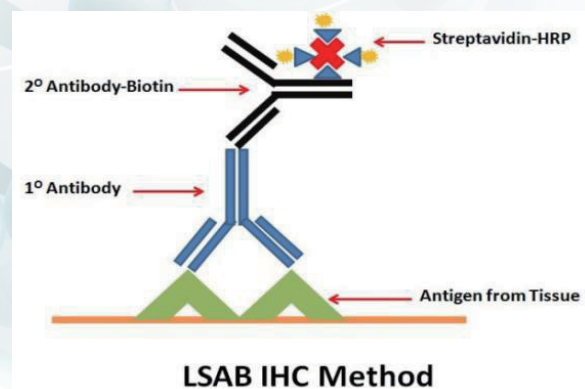
GeneCopoeia now offers kits and reagents for immunohistochemistry (IHC) detection and histology staining that meet your specific research needs.

## VitroView™ LSAB Immunohistochemistry (IHC) Detection Systems

VitroView™ LSAB IHC Kits are based on a labeled streptavidin-biotin (LSAB) method. This method utilizes a biotinylated secondary antibody that links primary antibodies to a streptavidin-peroxidase conjugate. In this method, a single primary antibody is subsequently associated with multiple biotin molecules. Therefore, an increase in sensitivity is achieved compared with direct peroxidase-conjugate methods.

### Advantages:

- 1) High sensitivity
- 2) Low background
- 3) Ready-to-use
- 4) High reproducibility
- 5) Budget-friendly



Product	Catalog#	Quantity	Application
LSAB IHC Kit (Mouse IgG)	VB-6015	150 tests	IHC for detecting a primary antibody made from mouse
LSAB IHC/DAB Kit (Mouse IgG)	VB-6015D	150 tests	IHC for detecting a primary antibody made from rabbit
LSAB IHC Kit (Rabbit IgG)	VB-6017	150 tests	IHC for detecting a primary antibody made from rabbit
LSAB IHC/DAB Kit (Rabbit IgG)	VB-6017D	150 tests	IHC for detecting a primary antibody made from rabbit
LSAB IHC Kit (Rat IgG)	VB-6019	150 tests	IHC for detecting a primary antibody made from rat
LSAB IHC/DAB Kit (Rat IgG)	VB-6019D	150 tests	IHC for detecting a primary antibody made from rat
LSAB IHC Kit (Goat IgG)	VB-6021	150 tests	IHC for detecting a primary antibody made from goat
LSAB IHC/DAB Kit (Goat IgG)	VB-6021D	150 tests	IHC for detecting a primary antibody made from goat

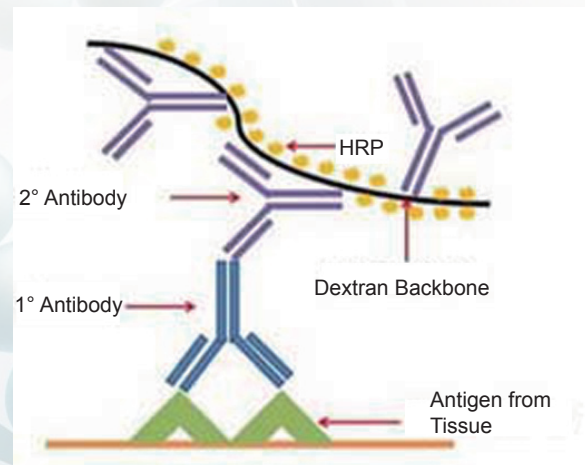
# Histology/IHC Reagents

## VitroView™ Polymer Based 1-Step Immunohistochemistry (IHC) Detection Systems

Polymerizing enzymes and attaching these polymers to antibodies is a recently-developed technology. This technology has been used for both primary antibodies and detection systems. The VitroView™ Polymer Based 1- step IHC Kit utilizes a novel polymerization technology to prepare polymeric HRP-linker antibody conjugates.

### Advantages:

- 1) Biotin-free
- 2) High sensitivity
- 3) Low background
- 4) Simple and fast
- 5) Ready-to-use
- 6) Simplified multiple labeling

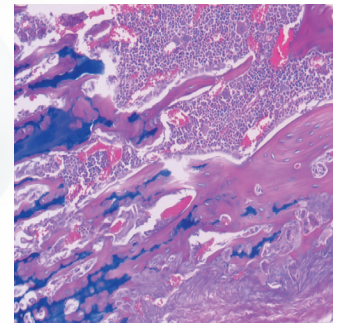
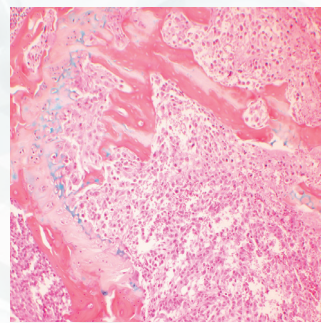
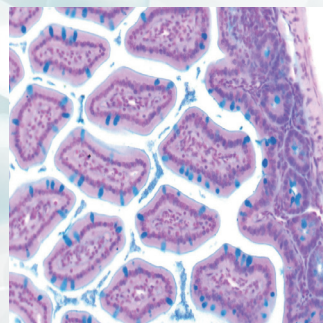
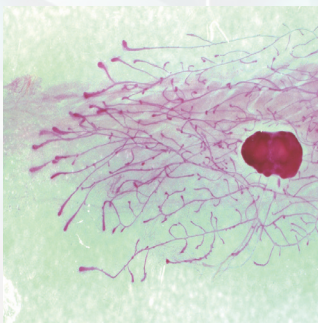


Product	Catalog#	Quantity	Applications
Universal 1-step Polymer-Based IHC kit (Anti-Mouse/Rabbit Ig)	VB-6023s	50 tests	IHC for detecting a primary antibody made from mouse or Rabbit
	VB-6023	100 tests	
Universal 1-step Polymer-Based IHC/DAB kit (Anti-Mouse/Rabbit Ig)	VB-6023D	100 tests	IHC for detecting a primary antibody made from mouse
	VB-6024s	50 tests	
1-Step Anti-Mouse Polymer-Based IHC kit	VB-6024	100 tests	IHC for detecting a primary antibody made from rabbit
	VB-6024D	100 tests	
1-Step Anti-Mouse Polymer-Based IHC/DAB kit	VB-6025s	50 tests	IHC for detecting a primary antibody made from mouse
	VB-6025	100 tests	
1-Step Anti-Rabbit Polymer-Based IHC kit	VB-6025D	100 tests	IHC for detecting a primary antibody made from rabbit
	VB-6026s	50 tests	
1-Step Anti-Rabbit Polymer-Based IHC/DAB kit	VB-6026	100 tests	IHC for detecting a primary antibody made from rabbit
	VB-6026D	100 tests	
1-Step Anti-Goat Polymer-Based IHC kit	VB-6027s	50 tests	IHC for detecting a primary antibody made from goat
	VB-6027	100 tests	
1-Step Anti-Goat Polymer-Based IHC/DAB kit	VB-6027D	100 tests	IHC for detecting a primary antibody made from goat
	VB-6027s	50 tests	
1-Step Anti-Rat Polymer-Based IHC kit	VB-6027	100 tests	IHC for detecting a primary antibody made from rat
	VB-6027D	100 tests	

# Histology/IHC Reagents

## VitroView™ Routine and Special Histology Stain Kits

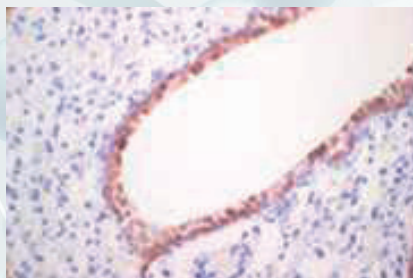
Product Name	Cat#	Applications
H&E Stain Kit	VB-3000	General purpose tissue stain
Mammary Gland Whole Mount Stain Kit	VB-3001	Mouse mammary gland whole mount stain
Alcian Blue Hematoxylin/Orange G Stain Kit	VB-3002	Bone and cartilage stain
Alcian Blue Stain Kit	VB-3003	Mucosubstances stain
PAS Stain Kit	VB-3004	Detection of glycogen in tissues
Alcian Blue - PAS Stain Kit	VB-3005	Tissue proteoglycan stain
Luxol Fast Blue Stain Kit	VB-3006	Identifying the basic neuronal structure in brain or spinal cord tissue
Oil Red O Stain Kit	VB-3007	Fat and lipid stain
Alizarin Red Stain Kit	VB-3008	Tissue calcium stain
Prussian Blue Stain Kit	VB-3009	Tissue Iron stain
Nissl Stain Kit	VB-3010	Neuron Nissl body stain
Congo Red Amyloid Stain Kit	VB-3011	Tissue amyloid stain
Sudan Black B Lipid Stain Kit	VB-3012	Fat and lipid stain
Toluidine Blue Stain Kit	VB-3013	Mast cell stain
Modified Gomori's Trichrome Stain Kit	VB-3014	Differentiate collagen and muscle in tumors
Bielschowsky's Silver Stain Kit	VB-3015	Detection of neurites and neurofibrillary tangles



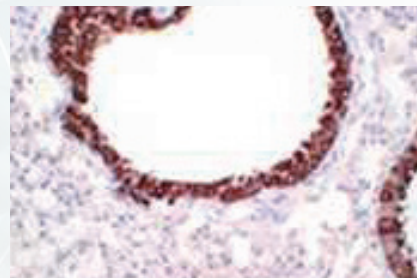
# Histology/IHC Reagents

## Related Reagents/Kits for IHC

Product	Catalog#	Quantity	Applications
Citrate Buffer (10x)	VB-6030	250 ml	IHC Antigen Retrieval
Citrate Buffer (1x)	VB-6031	1 Liter	IHC Antigen Retrieval
EDTA Antigen Retrieval Buffer (10x)	VB-6032	250ml	IHC Antigen Retrieval
EDTA Antigen Retrieval Buffer (1x)	VB-6033	1 Liter	IHC Antigen Retrieval
Proteinase K Antigen Retrieval Kit	VB-6034s	200 Tests	IHC Antigen Retrieval
	VB-6034	2000 Tests	
Antibody Dilution Buffer	VB-6002	100ml	IHC Antibody dilution
DAB Substrate Kit	VB-6003	1000 Tests	Substrate for use in IHC
Enhanced DAB Substrate Kit	VB-6003E	1000 Tests	Substrate for use in IHC
IHC Hematoxylin Counterstain Kit	VB-6004	300 Tests	IHC counterstain



CC10 IHC/DAB



CC10 IHC/Enhanced DAB

We also provide a full range of histology services for researchers.

Contact us for more details!



GeneCopeia products' package

**GeneCopeia, Inc.**  
9620 Medical Center Drive, Suite 101  
Rockville, MD 20850, USA

Website: [www.genecopoeia.com](http://www.genecopoeia.com)

HIS2-092214