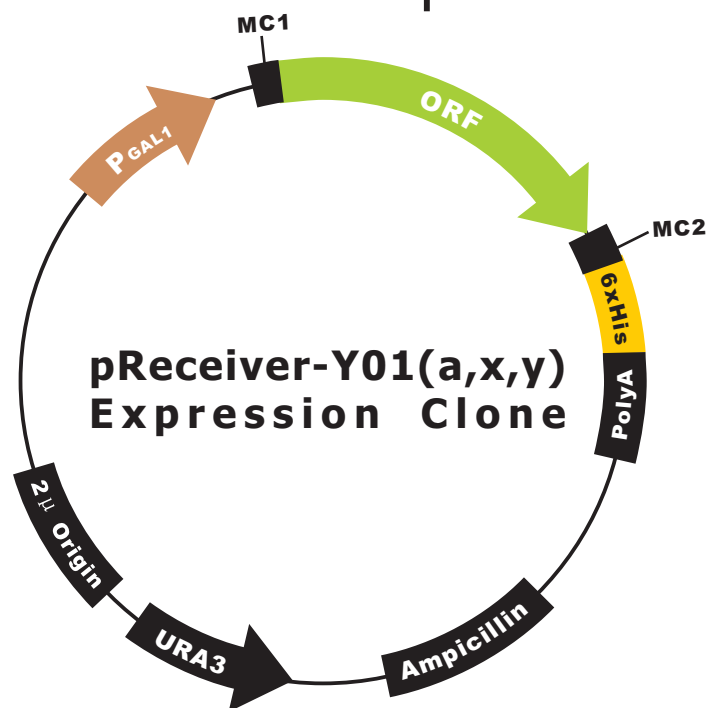


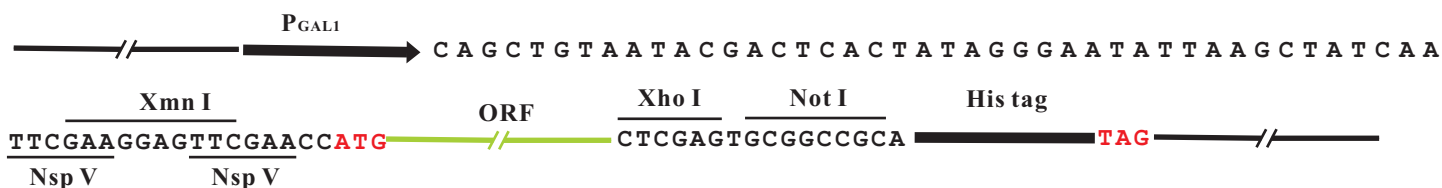
OmicLink™ Expression Clone (GAL1 Promoter)



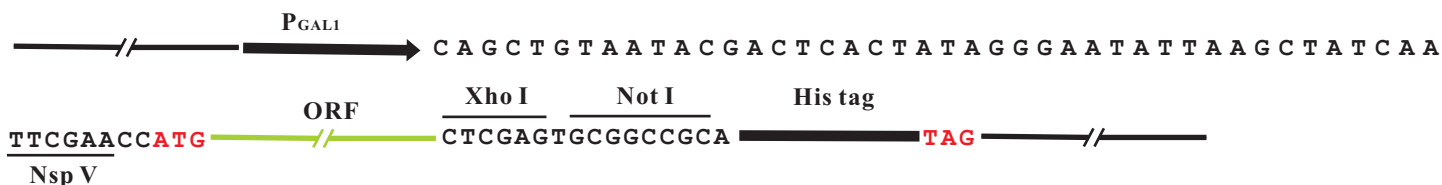
Vector Features

Promoter	GAL1
Host Cell	<i>S. cerevisiae</i>
Bacterial selection antibiotic	Ampicillin
Tag	C-His

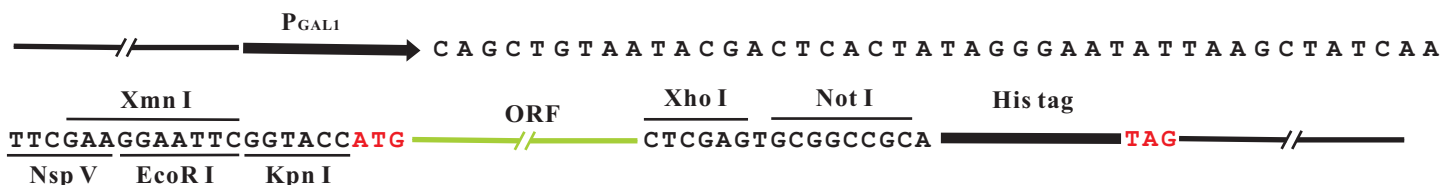
pReceiver-Y01a-Xmnl



pReceiver-Y01a-NspV



pReceiver-Y01x



pReceiver-Y01y

